

# JV454 OMNIA



# JV454 OMNIA

**JV454 OMNIA** è una vera enciclopedia del rivestimento murale naturale con **258 articoli** in materiali vari disponibili in una palette cromatica davvero unica, che stimolano i sensi della vista e del tatto, dove ogni articolo è una storia da raccontare, un paese da scoprire, un'arte da rivivere.

Una ricca e preziosa raccolta di rivestimenti murali realizzati con le più esclusive e raffinate fibre naturali provenienti da tutto il mondo: **sete, lini, abaca, paglie, bamboo, rafie, jute, paper weave, essenze in legno o sughero, fibre in trame intrecciate** tutte colorate con tecniche naturali e in grado di vestire le pareti, trasformando gli ambienti in luoghi davvero unici e autentici. La marcatura presente tra telo e telo, data dalle tecniche di tintura o dal cambiamento di fibra, è specchio della vera qualità naturale del prodotto e quindi motivo di pregio e di unicità esclusiva.

***JV454 OMNIA** is a true encyclopedia of natural wallcoverings with **258 items** in various materials available in a truly unique color palette, which stimulate the senses of sight and touch, where each item is a story to tell, a country to discover, an art to be relived. A rich and precious collection of wallcoverings made with the most exclusive and refined natural fibers from all over the world, all colored with natural techniques: **silks, linens, abaca, hems, bamboo, raffia, jute, paper weave, essences in wood or cork, fibers in intertwined textures**. The marking present between a drop and the other is given by the dyeing techniques or by the change of fiber and is the mirror of the true natural quality of the product and expression of its value and exclusive uniqueness.*



Tutti i parati della collezione JV454 Omnia sono ottenuti da materiali naturali lavorati artigianalmente. Ciò può causare variazioni di texture e differenze di tinta tra un telo e l'altro, che segnano la giunta.

Sono anche possibili fiammature, leggere sbavature, nodi nel filato o fibre sfilacciate.

Tali caratteristiche sono da ritenersi specchio della vera qualità naturale del prodotto e sono quindi motivo di pregio e di unicità esclusiva.

È inoltre da tenere a mente che i colori mostrati in questo catalogo e sul sito [www.jannellievolpi.it](http://www.jannellievolpi.it) possono subire significative variazioni da schermo a schermo.

*All the wallcoverings of the JV454 Omnia collection are made from handcrafted natural materials. This can cause variations in texture and color between rolls, which makes the marking of the joint line inevitable. Flares, slight burrs, knots in the yarn or frayed fibres are also possible.*

*These characteristics are to be considered a mirror of the true natural quality of the product and are therefore a reason of value and exclusive uniqueness.*

*Please also note that colors shown in this catalog and on the website [www.jannellievolpi.it](http://www.jannellievolpi.it) may experience significant variations from screen to screen.*



## JV 454 Omnia

## Design

## Abaca

### Composizione Tecnica Technical Composition

100% abaca su base TNT  
100% abaca on Non-Woven  
backing

### Larghezza disegno Design width

91,5 cm  
36 inches

### Rapporto del disegno Design repeat

Libero 0 cm  
Free match 0 inches

### Unità di vendita Selling unit

Metro lineare  
Linear meter



3000 Abaca



3011 Abaca



3012 Abaca



3008 Abaca



3009 Abaca



3027 Abaca



3013 Abaca



3010 Abaca



3001 Abaca



3020 Abaca



3016 Abaca



3017 Abaca



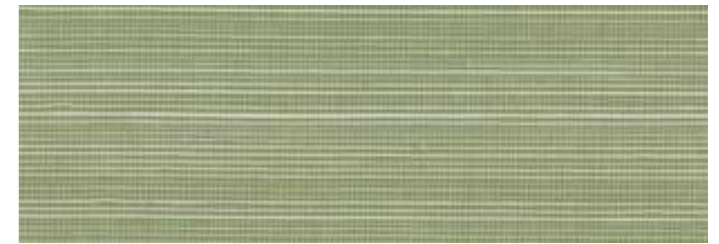
3018 Abaca



3022 Abaca



3024 Abaca



3002 Abaca



3005 Abaca



3006 Abaca



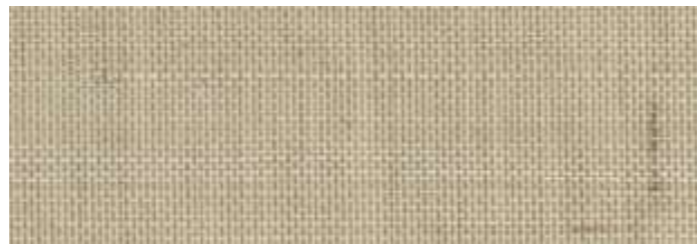
3026 Abaca



3004 Abaca



3015 Abaca



3021 Abaca



3023 Abaca



3003 Abaca



3007 Abaca



3028 Abaca



3025 Abaca



3009 Abaca



3014 Abaca



3030 Cork

## JV 454 Omnia

## Design

## Cork

### Composizione Tecnica Technical Composition

100% sughero su base TNT

100% Cork on Non-Woven  
backing

### Larghezza disegno Design width

91,5 cm  
36 inches

### Rapporto del disegno Design repeat

Libero 0 cm  
Free match 0 inches

### Unità di vendita Selling unit

Metro lineare  
Linear meter



3033 Cork



3038 Cork



3035 Cork



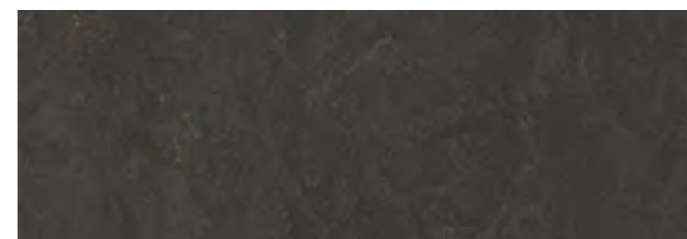
3036 Cork



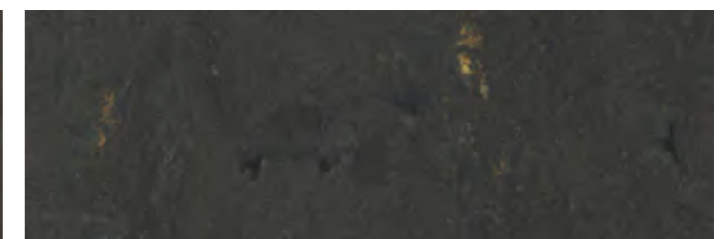
3034 Cork



3037 Cork



3031 Cork



3032 Cork

**Composizione Tecnica**  
*Technical Composition*

100% filati di cotone su base TNT

*100% cotton yarn on Non-Woven backing*

**Larghezza disegno**  
*Design width*

100 cm  
*39,4 inches*

**Rapporto del disegno**  
*Design repeat*

Libero 0 cm  
*Free match 0 inches*

**Unità di vendita**  
*Selling unit*

Metro lineare  
*Linear meter*



3054 Cotton Yarn



3048 Cotton Yarn



3049 Cotton Yarn



3052 Cotton Yarn



3055 Cotton Yarn



3040 Cotton Yarn



3053 Cotton Yarn

**Composizione Tecnica**  
*Technical Composition*

100% filati di cotone su base TNT

*100% cotton yarn on Non-Woven backing*

**Larghezza disegno**  
*Design width*

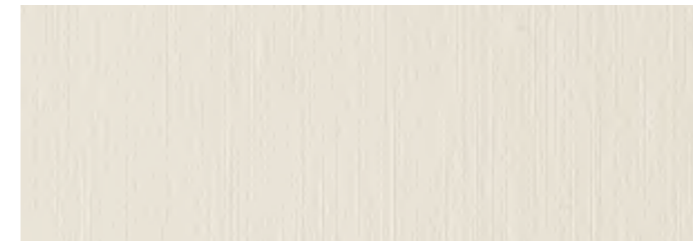
100 cm  
*39,4 inches*

**Rapporto del disegno**  
*Design repeat*

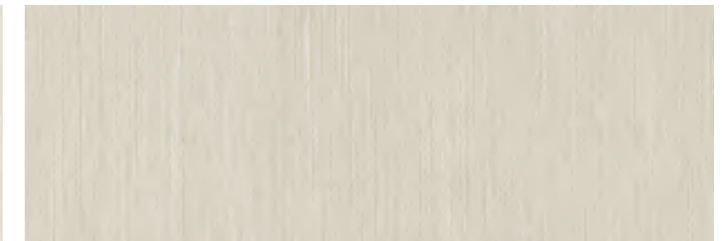
Libero 0 cm  
*Free match 0 inches*

**Unità di vendita**  
*Selling unit*

Metro lineare  
*Linear meter*



3044 Cotton Yarn



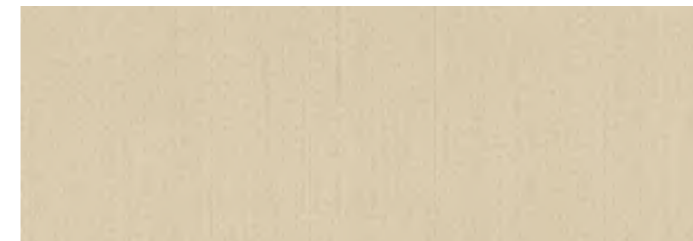
3041 Cotton Yarn



3045 Cotton Yarn



3042 Cotton Yarn



3046 Cotton Yarn



3047 Cotton Yarn



3051 Cotton Yarn



3050 Cotton Yarn



## JV 454 Omnia

## Design

## Hemp

### Composizione Tecnica Technical Composition

100% canapa su base TNT  
100% hemp on Non-Woven  
backing

### Larghezza disegno Design width

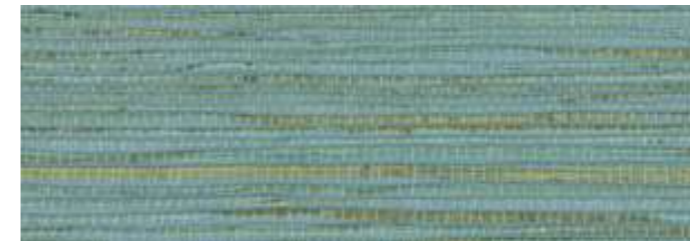
91,5 cm  
36 inches

### Rapporto del disegno Design repeat

Libero 0 cm  
Free match 0 inches

### Unità di vendita Selling unit

Metro lineare  
Linear meter



3072 Hemp



3082 Hemp



3074 Hemp



3083 Hemp



3060 Hemp



3081 Hemp



3085 Hemp



3086 Hemp





3066 Hemp



3079 Hemp



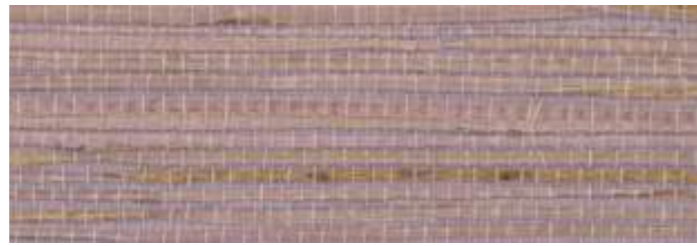
3075 Hemp



3061 Hemp



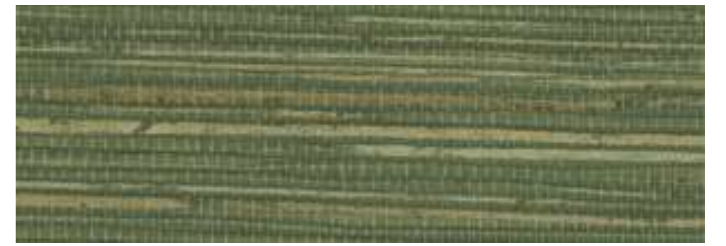
3073 Hemp



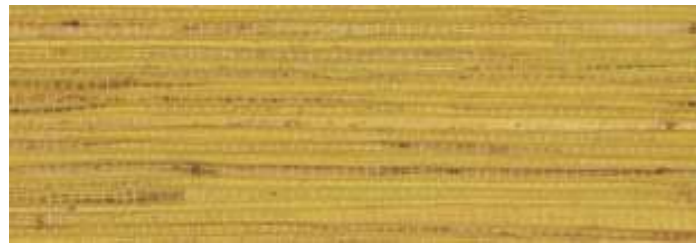
3078 Hemp



3076 Hemp



3062 Hemp



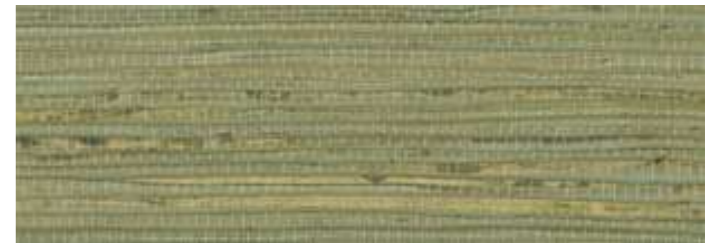
3067 Hemp



3070 Hemp



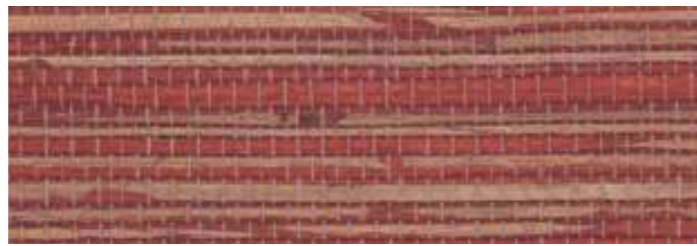
3084 Hemp



3077 Hemp



3065 Hemp



3069 Hemp



3064 Hemp



3063 Hemp



3071 Hemp



3068 Hemp



3080 Hemp



## JV 454 Omnia

## Design

## Jute

### Composizione Tecnica Technical Composition

100% iuta su base TNT  
100% jute on Non-Woven  
backing

### Larghezza disegno Design width

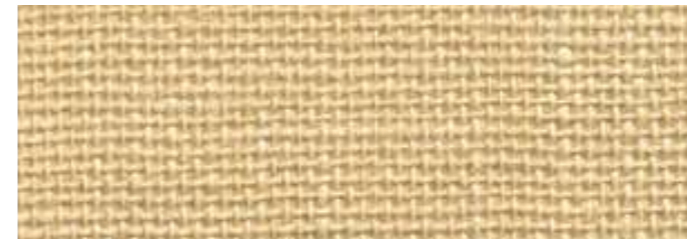
91,5 cm  
36 inches

### Rapporto del disegno Design repeat

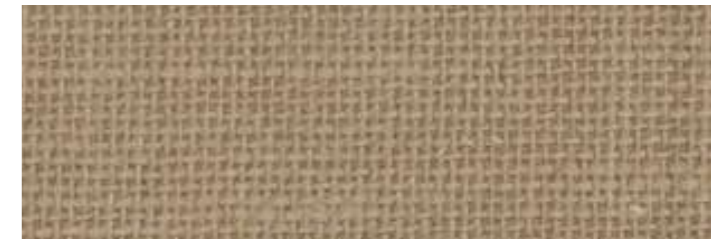
Libero 0 cm  
Free match 0 inches

### Unità di vendita Selling unit

Metro lineare  
Linear meter



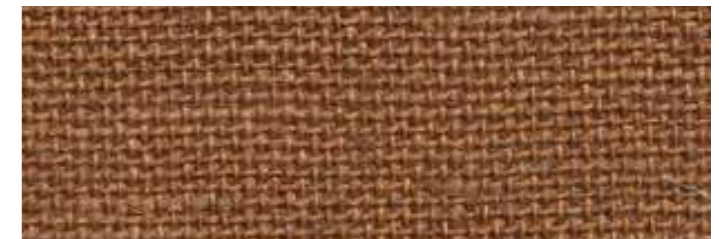
3094 Jute



3091 Jute



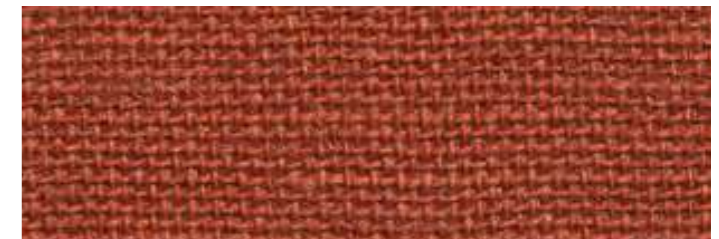
3096 Jute



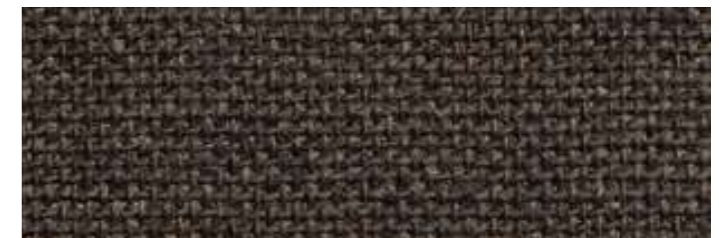
3093 Jute



3090 Jute



3099 Jute



3092 Jute

**Composizione Tecnica**  
*Technical Composition*

100% iuta su base TNT  
*100% jute on Non-Woven backing*

**Larghezza disegno**  
*Design width*

91,5 cm  
*36 inches*

**Rapporto del disegno**  
*Design repeat*

Libero 0 cm  
*Free match 0 inches*

**Unità di vendita**  
*Selling unit*

Metro lineare  
*Linear meter*

**Composizione Tecnica**  
*Technical Composition*

100% sisal su base TNT  
*100% sisal on Non-Woven backing*

**Larghezza disegno**  
*Design width*

91,5 cm  
*36 inches*

**Rapporto del disegno**  
*Design repeat*

Libero 0 cm  
*Free match 0 inches*

**Unità di vendita**  
*Selling unit*

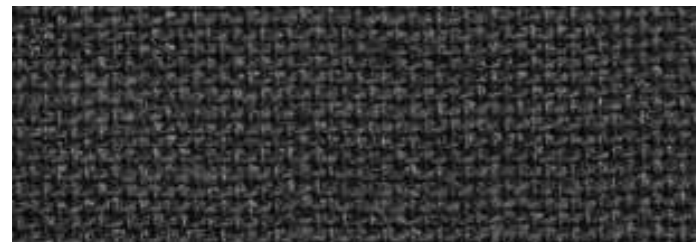
Metro lineare  
*Linear meter*



3097 Jute



3095 Jute



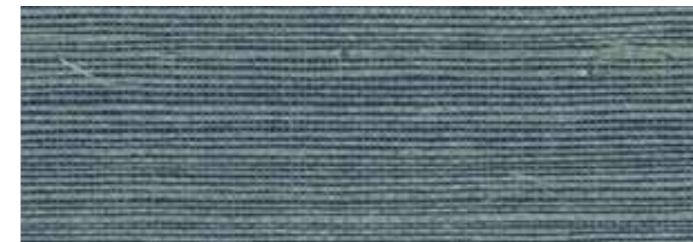
3098 Jute



3223 Sisal



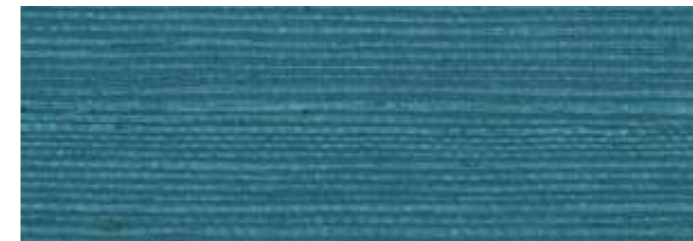
3252 Sisal



3224 Sisal



3251 Sisal



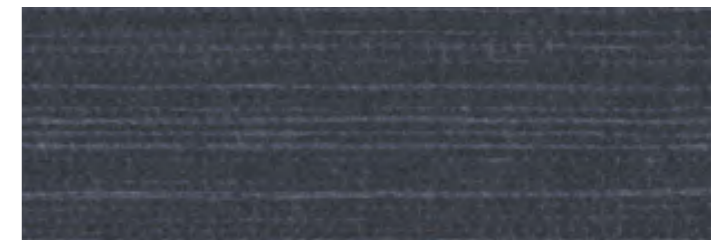
3220 Sisal



3249 Sisal



3222 Sisal



3250 Sisal



## JV 454 Omnia

## Design

## Sisal

### Composizione Tecnica Technical Composition

100% sisal su base TNT  
100% sisal on Non-Woven  
backing

### Larghezza disegno Design width

91,5 cm  
36 inches

### Rapporto del disegno Design repeat

Libero 0 cm  
Free match 0 inches

### Unità di vendita Selling unit

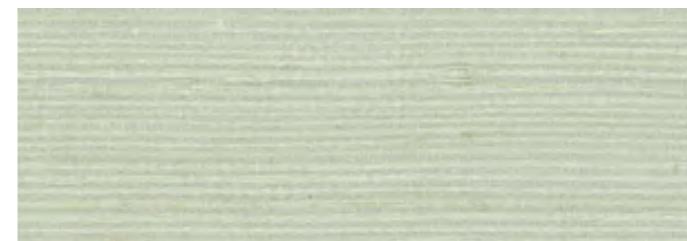
Metro lineare  
Linear meter



3242 Sisal



3237 Sisal



3243 Sisal



3221 Sisal



3241 Sisal



3255 Sisal



3226 Sisal



3236 Sisal



3225 Sisal



3230 Sisal



3256 Sisal



3232 Sisal



3240 Sisal



3238 Sisal



3245 Sisal



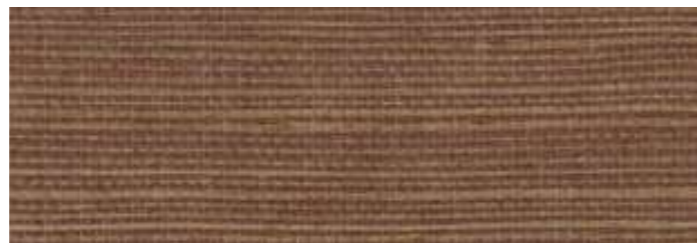
3233 Sisal



3229 Sisal



3239 Sisal



3227 Sisal



3231 Sisal



3244 Sisal



3228 Sisal



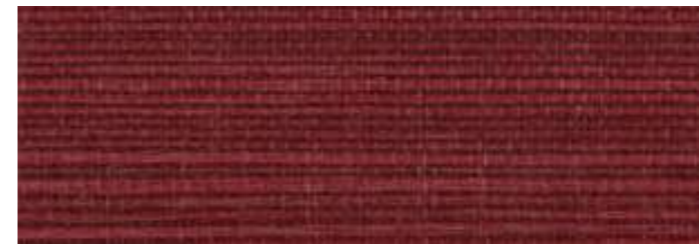
3246 Sisal



3234 Sisal



3247 Sisal



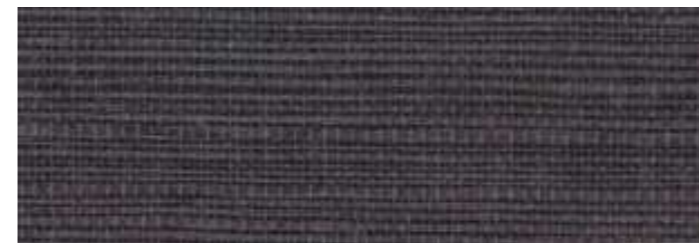
3235 Sisal



3254 Sisal



3248 Sisal



3253 Sisal



## JV 454 Omnia

## Design

## Linens

### Composizione Tecnica Technical Composition

100% lino su base TNT

100% linen on Non-Woven  
backing

### Larghezza disegno Design width

91,5 cm  
36 inches

### Rapporto del disegno Design repeat

Libero 0 cm  
Free match 0 inches

### Unità di vendita Selling unit

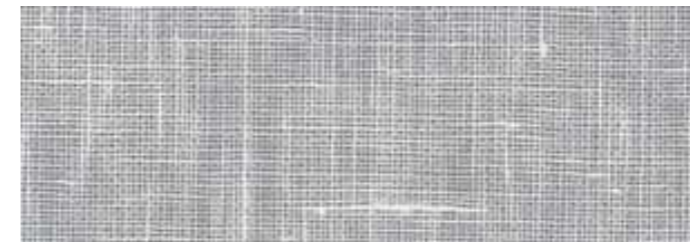
Metro lineare  
Linear meter



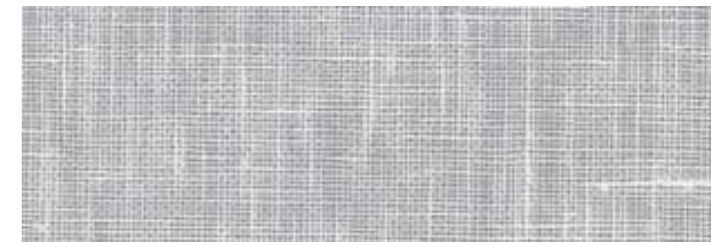
3130 Linen



3120 Linen



3133 Linen



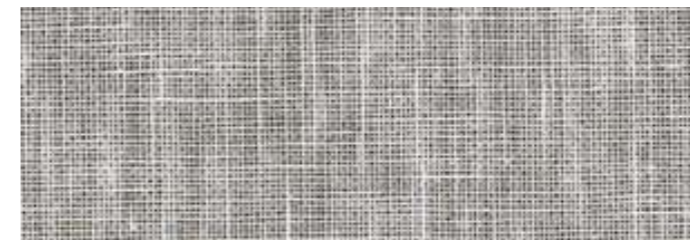
3129 Linen



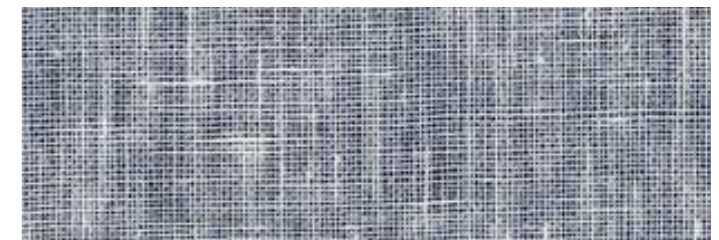
3126 Linen



3110 Linen



3131 Linen



3127 Linen

**Composizione Tecnica**  
*Technical Composition*

100% lino su base TNT  
*100% linen on Non-Woven backing*

**Larghezza disegno**  
*Design width*

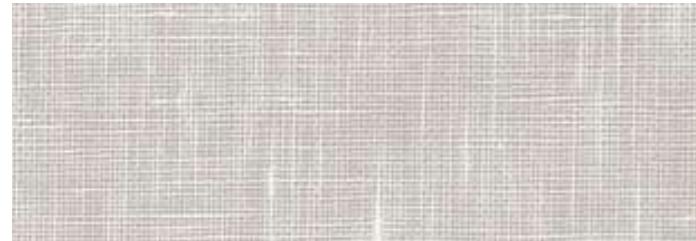
91,5 cm  
*36 inches*

**Rapporto del disegno**  
*Design repeat*

Libero 0 cm  
*Free match 0 inches*

**Unità di vendita**  
*Selling unit*

Metro lineare  
*Linear meter*



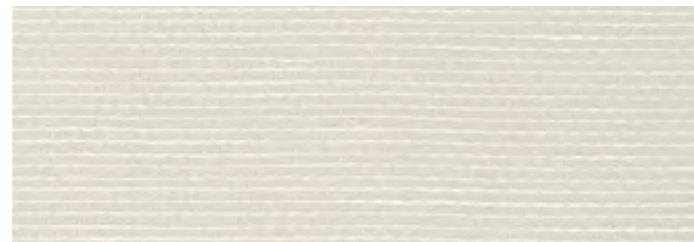
3114 Linen



3112 Linen



3118 Linen



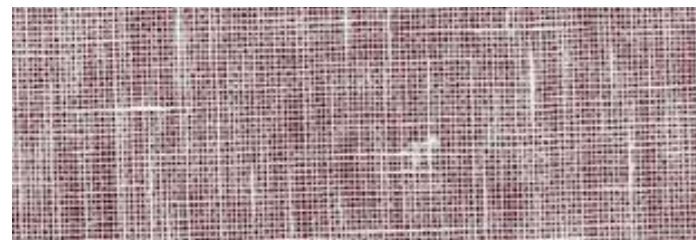
3113 Linen



3117 Linen



3119 Linen



3123 Linen



3122 Linen

**Composizione Tecnica**  
*Technical Composition*

100% lino su base TNT  
*100% linen on Non-Woven backing*

**Larghezza disegno**  
*Design width*

137 cm  
*54 inches*

**Rapporto del disegno**  
*Design repeat*

Libero 0 cm  
*Free match 0 inches*

**Unità di vendita**  
*Selling unit*

Metro lineare  
*Linear meter*



3115 Linen



3132 Linen



3116 Linen



3124 Linen



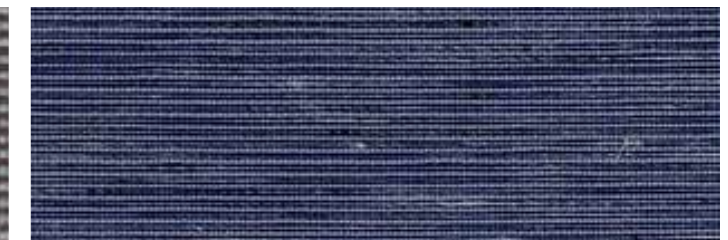
3121 Linen



3111 Linen



3125 Linen



3128 Linen



## JV 454 Omnia

## Design

## Paper Weave

### Composizione Tecnica Technical Composition

100% paper weave su base  
TNT

100% paper weave on  
Non-Woven backing

### Larghezza disegno Design width

91,5 cm  
36 inches

### Rapporto del disegno Design repeat

Libero 0 cm  
Free match 0 inches

### Unità di vendita Selling unit

Metro lineare  
Linear meter



3173 Paper Weave



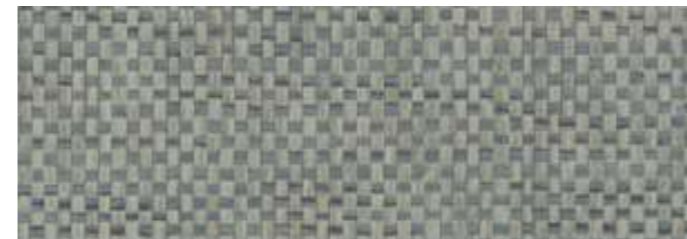
3172 Paper Weave



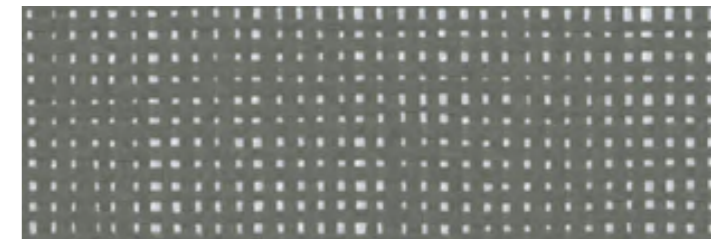
3175 Paper Weave



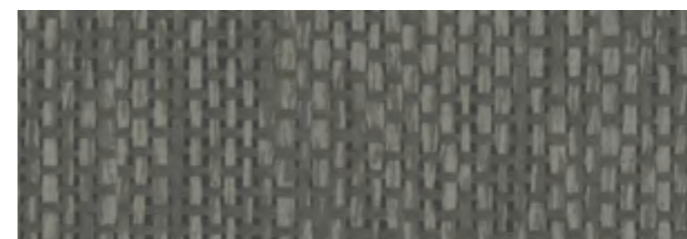
3182 Paper Weave



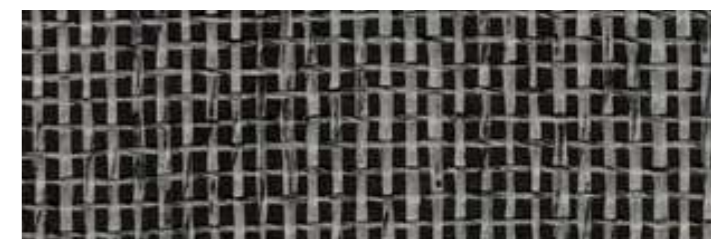
3177 Paper Weave



3174 Paper Weave



3178 Paper Weave



3176 Paper Weave





3142 Paper Weave



3143 Paper Weave



3158 Paper Weave



3169 Paper Weave



3144 Paper Weave



3141 Paper Weave



3161 Paper Weave



3160 Paper Weave



3163 Paper Weave



3164 Paper Weave



3145 Paper Weave



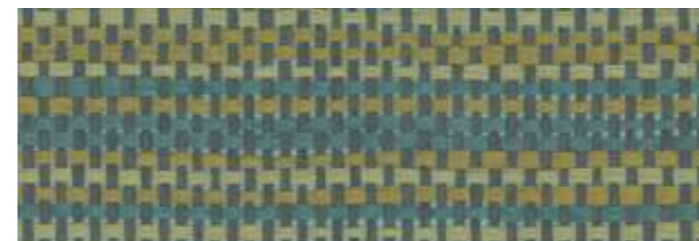
3159 Paper Weave



3162 Paper Weave



3167 Paper Weave



3140 Paper Weave



3171 Paper Weave



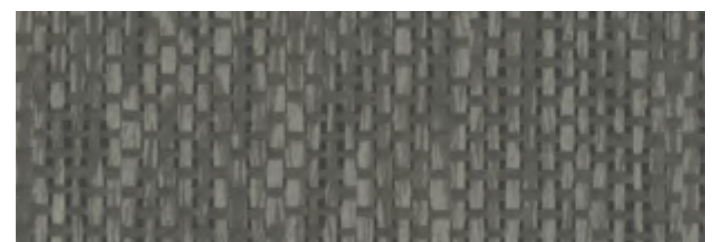
3148 Paper Weave



3149 Paper Weave



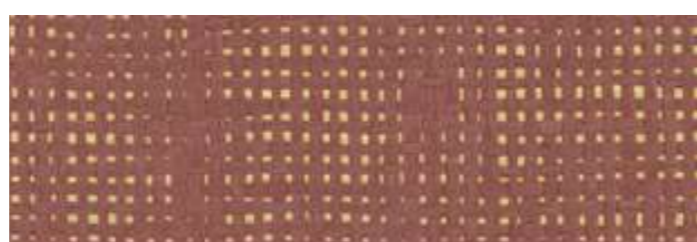
3179 Paper Weave



3155 Paper Weave



3150 Paper Weave



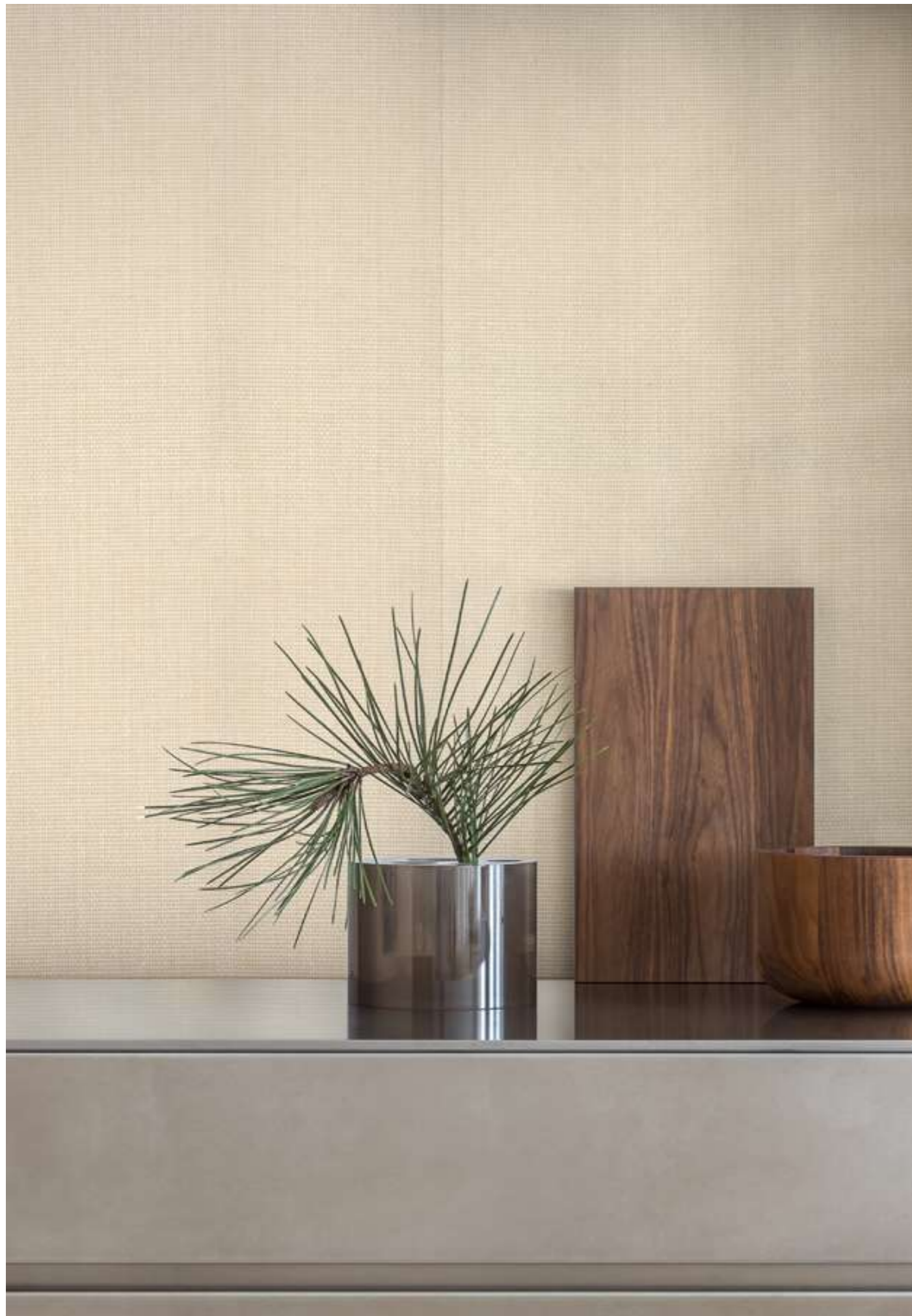
3151 Paper Weave



3180 Paper Weave



3170 Paper Weave



3181 Paper Weave



3152 Paper Weave



3147 Paper Weave



3153 Paper Weave



3165 Paper Weave



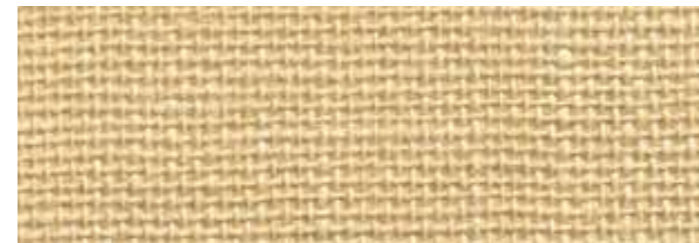
3157 Paper Weave



3166 Paper Weave



3146 Paper Weave



3168 Paper Weave



3154 Paper Weave



3156 Paper Weave



## JV 454 Omnia

## Design

## Raffia

### Composizione Tecnica Technical Composition

100% raffia su base TNT

100% raffia on Non-Woven  
backing

### Larghezza disegno Design width

89 cm  
35 inches

### Rapporto del disegno Design repeat

Libero 0 cm  
Free match 0 inches

### Unità di vendita Selling unit

Metro lineare  
Linear meter



3195 Raffia



3191 Raffia



3192 Raffia



3196 Raffia



3194 Raffia



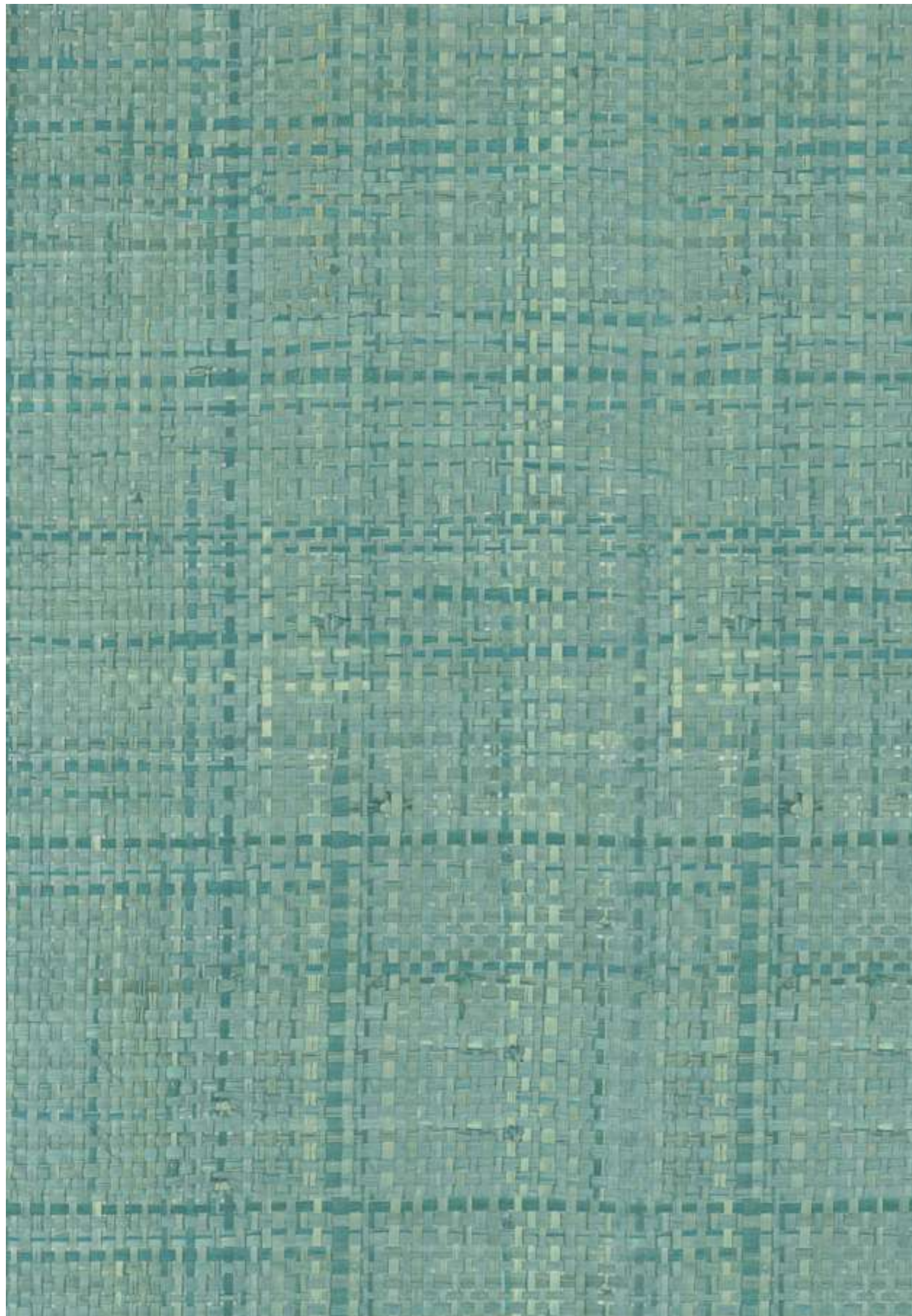
3197 Raffia



3196 Raffia



3193 Raffia



3190 Raffia

## JV 454 Omnia

### Composizione Tecnica Technical Composition

100% raffia su base carta

100% raffia on paper  
backing

## Design

## Natural Raffia

### Larghezza disegno Design width

91 cm  
35 inches

### Rapporto del disegno Design repeat

Libero 0 cm  
Free match 0 inches

### Unità di vendita Selling unit

Metro lineare  
Linear meter



4762 Natural Raffia



4761 Natural Raffia



4763 Natural Raffia



4760 Natural Raffia



4765 Natural Raffia



4772 Natural Raffia



4768 Natural Raffia



4766 Natural Raffia



## JV 454 Omnia

## Design

## Silk

### Composizione Tecnica Technical Composition

100% seta su base TNT  
100% silk on Non-Woven  
backing

### Larghezza disegno Design width

91,5 cm  
36 inches

### Rapporto del disegno Design repeat

Libero 0 cm  
Free match 0 inches

### Unità di vendita Selling unit

Metro lineare  
Linear meter



3214 Silk



3201 Silk



3215 Silk



3216 Silk



3207 Silk



3217 Silk



3218 Silk



3202 Silk



3211 Silk



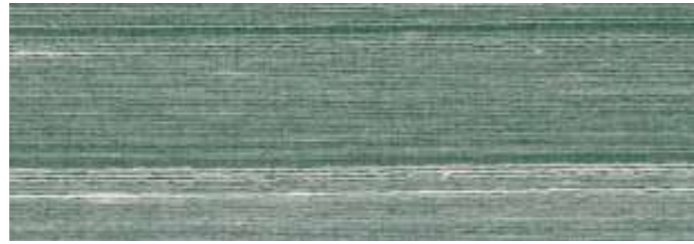
3208 Silk



3210 Silk



3212 Silk



3203 Silk



3204 Silk



3205 Silk



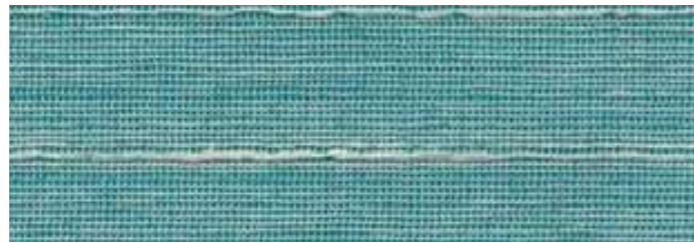
3206 Silk



3213 Silk



3209 Silk



3200 Silk

## JV 454 Omnia

## Design

## Silk

**Larghezza disegno** 91,5 cm  
*Design width* 36 inches

**Rapporto del disegno** Libero 0 cm  
*Design repeat* Free match 0 inches

**Unità di vendita** Metro lineare  
*Selling unit* Linear meter



4740 Bright Silk



4741 Bright Silk

**Larghezza disegno** 87 cm  
*Design width* 36 inches

**Rapporto del disegno** Libero 0 cm  
*Design repeat* Free match 0 inches

**Unità di vendita** Metro lineare  
*Selling unit* Linear meter



4792 Silk



4793 Silk



4791 Metalized Silk



## JV 454 Omnia

## Design

## Wood Veneer

### Composizione Tecnica Technical Composition

100% legno su base TNT

100% wood veneer on  
Non-Woven backing

### Larghezza disegno Design width

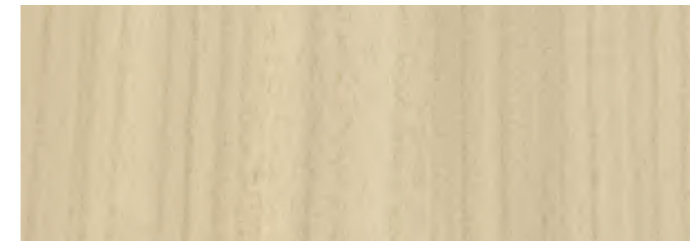
91,5 cm  
36 inches

### Rapporto del disegno Design repeat

Libero 0 cm  
Free match 0 inches

### Unità di vendita Selling unit

Metro lineare  
Linear meter



3267 Wood Veneer



3261 Wood Veneer



3271 Wood Veneer



3276 Wood Veneer



3274 Wood Veneer



3266 Wood Veneer



3265 Wood Veneer



3264 Wood Veneer



3268 Wood Veneer

## JV 454 Omnia

## Design

## Wood Veneer

### Composizione Tecnica Technical Composition

100% legno su base TNT

100% wood veneer on  
Non-Woven backing

### Larghezza disegno Design width

91,5 cm  
36 inches

### Rapporto del disegno Design repeat

Libero 0 cm  
Free match 0 inches

### Unità di vendita Selling unit

Metro lineare  
Linear meter



3272 Wood Veneer



3260 Wood Veneer



3269 Wood Veneer



3275 Wood Veneer



3262 Wood Veneer



3273 Wood Veneer

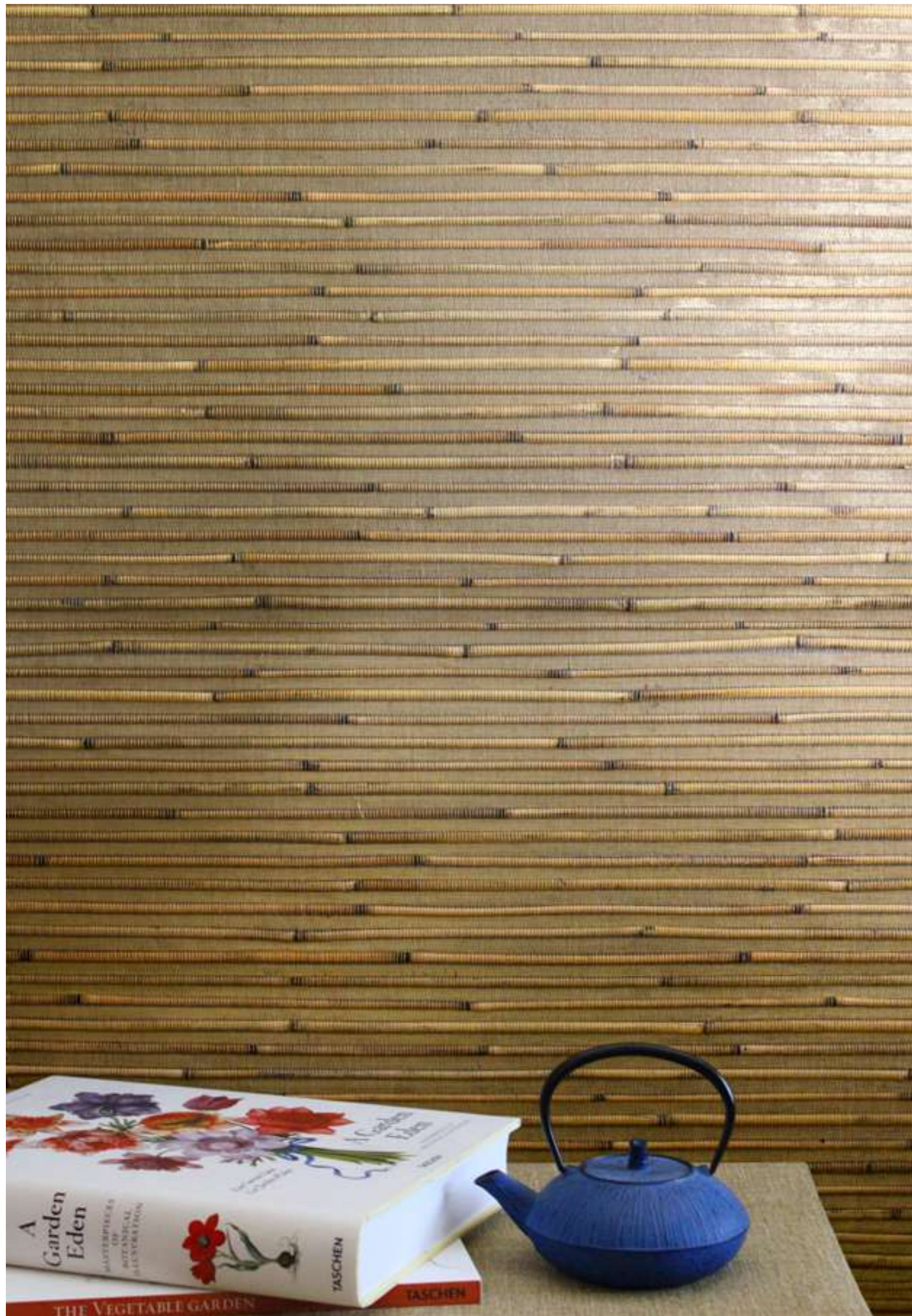


3263 Wood Veneer



3270 Wood Veneer





**JV 454 Omnia**

Design

**Bamboo  
Shine  
Soft Rug**

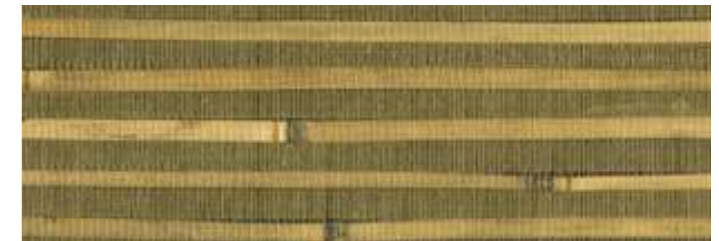
**Larghezza disegno** 91 cm  
**Design width** 36 inches

**Rapporto del disegno** Libero 0 cm  
**Design repeat** Free match 0 inches

**Unità di vendita** Metro lineare  
**Selling unit** Linear meter



4710 Bamboo



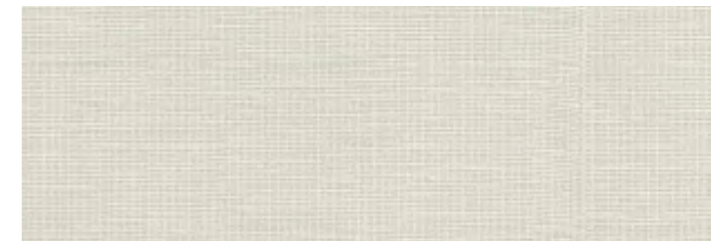
4711 Bamboo



4731 Soft Rug



4730 Soft Rug



4720 Shine



**Head Office JV S.p.A**

Via Cassino d'Alberi 19 | 20067 Tribiano | Milano | Italy | T +39 02 516631  
customer@jannellievolti.it

**JVstudio**

Via Statuto 21. 20121. Milano | T +39 02 20523. 1 | 02 20523137  
studio@jannellievolti.it

**JVstore**

C.so Garibaldi 81. 20121 Milano | T +39 02 20523. 1 | 02 20523134  
store@jannellievolti.it

[www.jannellievolti.it](http://www.jannellievolti.it)



Visit us on:



