



marimekko

WALLCOVERINGS 06

BY **JV**
JANNELLI&VOLPI

La collaborazione

Questa è la sesta edizione della partnership Marimekko e Jannelli&Volpi.

La nuova selezione di carte da parati offre un versatile collage di grafiche iconiche e nuovi design di artisti del calibro di Maija Isola, Aino-Maija Metsola e Carina Seth Andersson.

La missione permanente di Marimekko è portare ovunque colore e gioia nella vita e nelle case delle persone.

Quella di Jannelli&Volpi di interpretare con la migliore tecnica questo unico patrimonio e diffondere la cultura grafica dal sapere prezioso ed esclusivo.

La storia

Marimekko è stata fondata nel 1951 dalla visionaria Armi Ratia.

Il cuore e l'anima del design di stampa di Marimekko è la sua sede a zero emissioni di carbonio a Helsinki, un parco giochi di creatività dallo spirito libero in cui le grafiche audaci in colori sorprendenti prendono vita.

The collaboration

This is the sixth edition of the Marimekko and Jannelli&Volpi partnership.

The new wallpaper selection features a versatile collage of iconic graphics and new designs by renowned designers such as Maija Isola, Aino-Maija Metsola and Carina Seth Andersson.

Marimekko's permanent mission is to bring color and joy everywhere into people's lives and homes.

While Jannelli&Volpi's mission is to interpret this unique heritage with the best technique and spread the graphic culture of precious and exclusive knowledge.

The story

Marimekko was founded in 1951 by the visionary Armi Ratia.

The heart and soul of Marimekko's print design is its zero-carbon headquarters in Helsinki, a free-spirited playground of creativity where bold graphics in striking colors come to life.

THE ART OF PRINTMAKING

Design senza tempo

La filosofia del design Marimekko è indipendente dal cambiamento delle tendenze.

È radicato in uno stile di vita ottimista e un genuino desiderio di ispirare attraverso un design senza tempo e funzionale.

Creare attraverso la comunità

In Marimekko il fare e progettare insieme è sempre stato il percorso verso l'innovazione. Qui infatti artisti e designer lavorano fianco a fianco con abili artigiani in una ricerca condivisa dell'originalità.

Unikko di Maija Isola

La straordinaria carriera di Maija Isola (1927-2001) come designer tessile è iniziata nel 1949 ed è durata 38 anni. Maija ha progettato più di 500 modelli di tessuto, che coprono una gamma incredibilmente diversificata di motivi e tecniche di progettazione.

Ha tratto ispirazione per il suo lavoro dall'arte popolare tradizionale e dall'arte visiva moderna, dalla natura e dai suoi innumerevoli viaggi in giro per il mondo. I suoi disegni, come Unikko (papavero), continuano ad essere una parte essenziale delle collezioni di Marimekko.

Timeless design

The Marimekko design philosophy is independent of changing trends. It is rooted in an upbeat lifestyle and a genuine desire to inspire through timeless and functional design.

Creating through community

At Marimekko, doing and designing together has always been the path towards innovation. Artists and Designers work side by side with skilled craftsmen in a shared search for originality.

Unikko by Maija Isola

Maija Isola's (1927-2001) extraordinary career as a textile designer has begun in 1949 and lasted 38 years.

Maija has designed more than 500 fabric patterns, covering an incredibly diverse range of motifs and design techniques. She drew inspiration for her work from traditional folk art and modern visual art, from nature and from her countless travels around the world.

Her drawings, such as Unikko (poppy), continue to be an essential part of the Marimekko collections.



ARMI RATIA founder



MAIJA ISOLA designer



Unikko

Aino-Maija Metsola

Aino-Maija Metsola è un'illustratrice e designer freelance con sede a Helsinki che crea stampe audaci ma sottili in cui i colori giocano un ruolo significativo. Aino-Maija è una narratrice versatile e visiva con un senso delle sfumature. Usa diverse tecniche che vanno dall'acquerello all'inchiostro, ai pennarelli ed alla tempera. I suoi disegni più riconoscibili per Marimekko sono Jurmo (nome di un'isola) e Juhannustaika (magia di mezza estate), nonché la serie di motivi pittorici Sääpäiväkirja (diario del tempo).

Aino-Maija Metsola

Aino-Maija Metsola is a freelance illustrator and designer based in Helsinki who creates bold but subtle prints in which colors play a significant role. Aino-Maija is a versatile and visual storyteller with a sense of nuance. She uses different techniques ranging from watercolor to ink, markers and tempera. Her most recognizable drawings for Marimekko are Jurmo (name of an island) and Juhannustaika (midsummer magic), as well as the series of pictorial motifs Sääpäiväkirja (diary of the time).



Ketunmarja

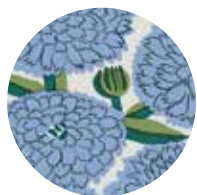


AINO-MAIJA METSOLA, Designer

PATTERNS



N°25105



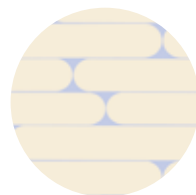
N°25106



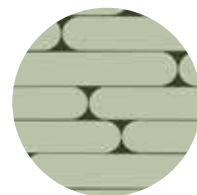
N°25107



N°25120



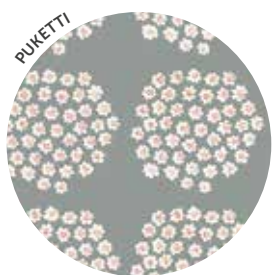
N°25121



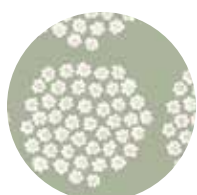
N°25122



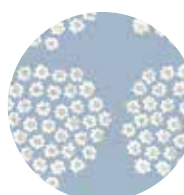
N°25123



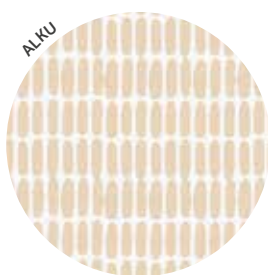
N°25125



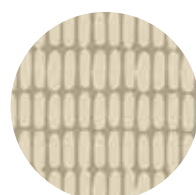
N°25126



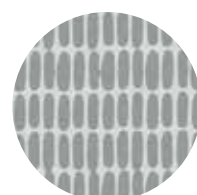
N°25127



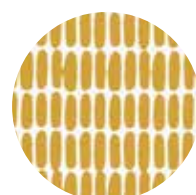
N°25130



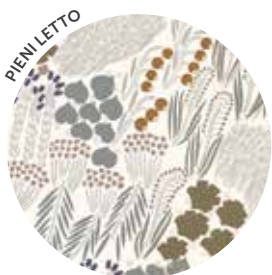
N°25131



N°25132



N°25133



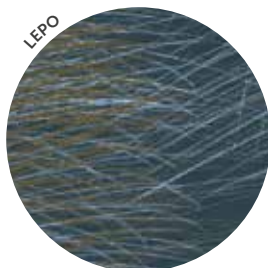
N°25145



N°25146



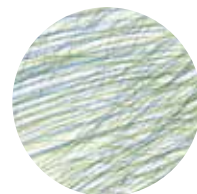
N°25147



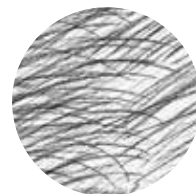
N°25140



N°25141



N°25142



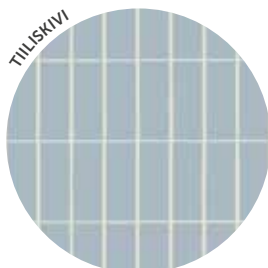
N°25143



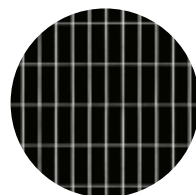
N°25150



N°25151



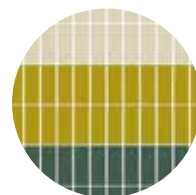
N°25110



N°25111



N°25112



N°25113



N°25114

Roll size 70 cm x 10,05 mt | 27,5 inches x 11 yards



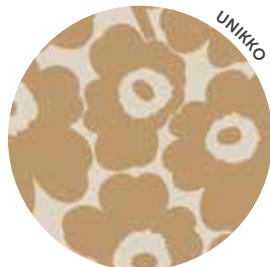
N°25100



N°25101



N°25102



N°25103

UNIKKO



N°25167



N°25166



N°25165

MARIKYLÄ



N°25183



N°25182



N°25181



N°25180

KURJENPOLVI



N°25172



N°25171



N°25170

MUSTA TAMMA



N°14123



N°14120



N°25185

SILKKIKUIKKA



N°25192



N°25191



N°25190

KASVIÖ



N°25176



N°25175

KETUNMARJA



N°25156



N°25155

ROSARIUM



N°25197



N°25196



N°25195

JOKU

Alku



Kurjenpolvi



Pieni Letto



Tiitiskivi



Primavera



Kasvio



Putki



Puketti



Musta Tanna





Joiku



Pieni Hyhmy



Silkkikuikka



Rosarium



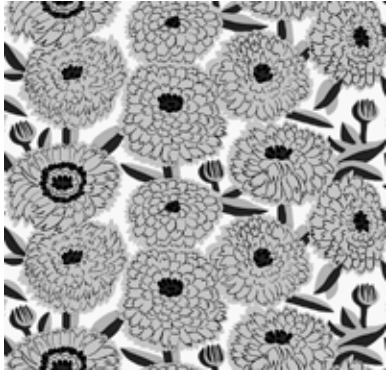
Marikyla



PATTERNS | TECHNICAL SHEET

Roll size 70 cm x 10,05 mt | 27,5 inches x 11 yards

PRIMAVERA



70 cm | 27,5 inches

Repeat
Saltato 67,4/20,4 cm
Offset match 26,5/8 inches

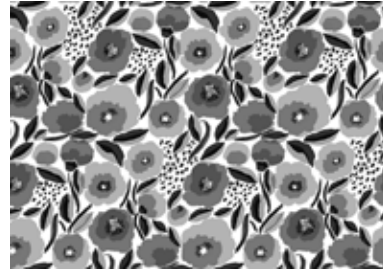
KURJENPOLVI



70 cm | 27,5 inches

Repeat
Pari 78 cm
Straight match 30,7 inches

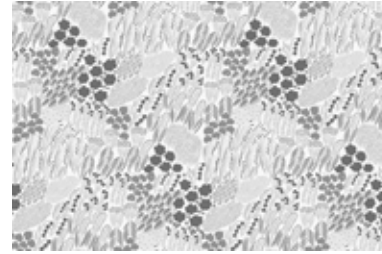
ROSARIUM



70 cm | 27,5 inches

Repeat
Pari 49,5 cm
Straight match 19,5 inches

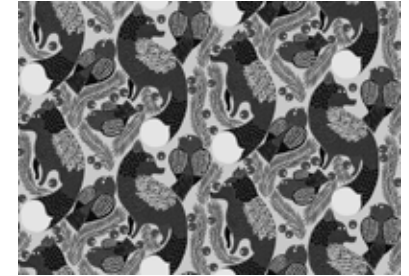
PIENI LETTO



70 cm | 27,5 inches

Repeat
Pari 45,7 cm
Straight match 18 inches

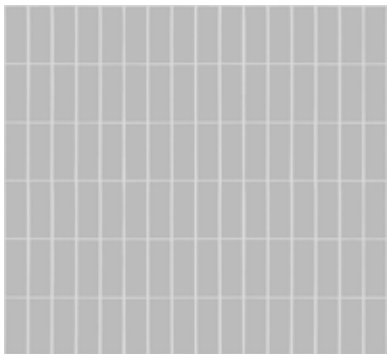
KETUNMARJA



70 cm | 27,5 inches

Repeat
Pari 49,5 cm
Straight match 19,5 inches

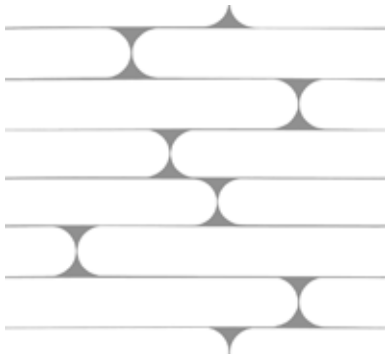
TIILISKIVI



70 cm | 27,5 inches

Repeat
Pari 64 cm
Straight match 25 inches

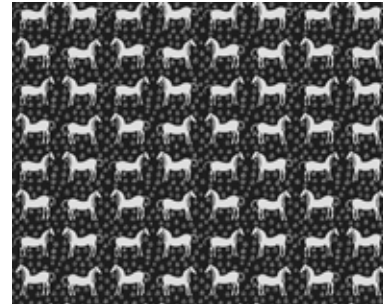
PUTKI



70 cm | 27,5 inches

Repeat
Pari 64 cm
Straight match 25 inches

MUSTA TAMMA



70 cm | 27,5 inches

Repeat
Pari 56,5 cm
Straight match 22,2 inches

JOIKU



70 cm | 27,5 inches

Repeat
Pari 50 cm
Straight match 19,7 inches

PIENI HYHMA



70 cm | 27,5 inches

Repeat
Saltato 48/22 cm
Offset match 18,9/ 8,6 inches

UNIKKO



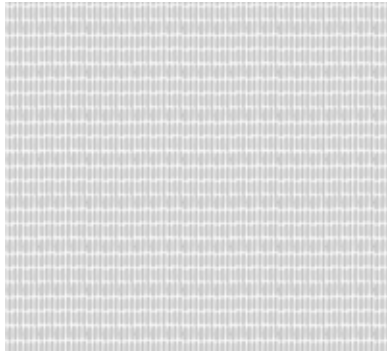
70 cm | 27,5 inches
 Repeat
 Saltato 58/29 cm
 Offset match 22,8/11,4 inches

SILKKIKUIKKA



70 cm | 27,5 inches
 Repeat
 Pari 64 cm
 Straight match 25 inches

ALKU



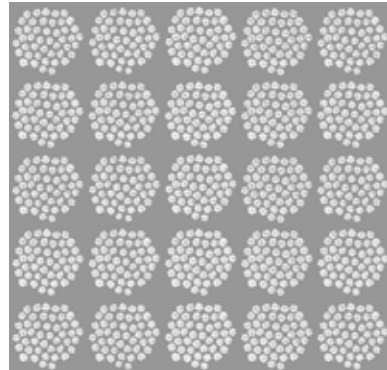
70 cm | 27,5 inches
 Repeat
 Pari 64 cm
 Straight match 25 inches

KASVIO



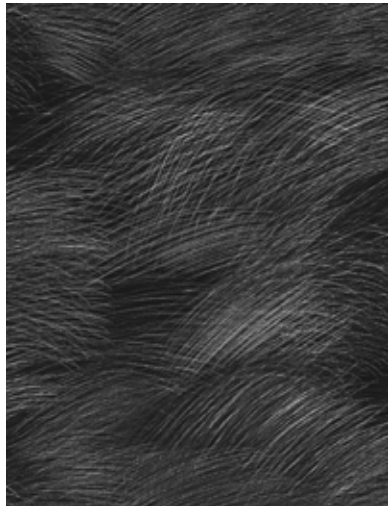
70 cm | 27,5 inches
 Repeat
 Saltato 55,3/48,2 cm
 Offset match 21,77/ 19 inches

PUKETTI



70 cm | 27,5 inches
 Repeat
 Pari 13,5 cm
 Straight match 5,3 inches

LEPO




70 cm | 27,5 inches
 Repeat
 Pari 91,4 cm
 Straight match 35,98 inches


MARIKYLA



70 cm | 27,5 inches
 Repeat
 Saltato 63/21 cm
 Offset match 24,8/8,26 inches

 Adesivo da applicare sulla superficie di sostegno da decorare
Adhesive to be applied to the support to be decorated

 Lavabile
Washable

 Buona solidità alla luce
Good light fastness

 Staccabile a secco
Strippable

I nostri certificati | our certifications





Head Office
Via Cassino d'Alberi 19 | 20067
Tribiano | Milano T +39 02 516631
customer@jannellievolti.it

JVstudio
Via Statuto 21 | 20121 | Milano
T +39 02 20523. 1 | 02 20523137
studio@jannellievolti.it

JVstore
C.so Garibaldi 81 | 20121 | Milano
T +39 02 20523. 1 | 02 20523134
store@jannellievolti.it