



**MISSONI**







**Jannelli&Volpi** and **Missoni** together again, therefore, with an innovative and surprising creative proposal that gives the walls the same strong personality that has always characterized the two companies, each leader in their own sector.

The passion for decoration is the point of contact between the two realities: an intense and profitable, passionate and spontaneous creative comparison where the emotion of the chromatic elements is intertwined with research into innovative materials and printing techniques.

The **Missoni Wallcoverings 05** wallpaper collection was born from this vision: an innovative proposal, which harmonizes shades, geometries and nature, in a kaleidoscope of designs, materials and colors interpreted with a technique with a strong innovative value.

**Jannelli&Volpi** y **Missoni** vuelven a unirse, por tanto, con una propuesta creativa innovadora y sorprendente que dota a las paredes de la misma fuerte personalidad que siempre ha caracterizado a las dos empresas, cada una líder en su propio sector.

La pasión por la decoración es el punto de contacto entre las dos realidades: una comparación creativa intensa y rentable, apasionada y espontánea donde la emoción de los elementos cromáticos se entrelaza con la investigación de materiales y técnicas de impresión innovadoras.

De esta visión nació la colección de papeles pintados **Missoni Wallcoverings 05**: una propuesta innovadora, que armoniza matices, geometrías y naturaleza, en un caleidoscopio de diseños, materiales y colores interpretados con una técnica de fuerte valor innovador.

**Jannelli&Volpi** e **Missoni** di nuovo insieme, quindi, con una proposta creativa innovativa e sorprendente che dona alle pareti la stessa decisa personalità che da sempre caratterizza le due aziende, leader ognuna nel proprio settore.

La passione per il decoro è il punto di contatto tra le due realtà: un confronto creativo intenso e proficuo, appassionato e spontaneo dove l'emozione degli elementi cromatici si intreccia con la ricerca su materiali e tecniche di stampa innovative.

Nasce da questa visione quindi la collezione di carte da parati **Missoni Wallcoverings 05**: una proposta innovativa, che armonizza sfumature, geometrie e natura, in un caleidoscopio di disegni, materiali e cromie interpretate con tecnica dal forte valore innovativo.

**Jannelli&Volpi** et **Missoni** s'associent donc à nouveau avec une proposition créative innovante et surprenante qui donne aux murs la même forte personnalité qui a toujours caractérisé les deux entreprises, chacune leader dans son propre secteur.

La passion pour la décoration est le point de contact entre les deux réalités : une confrontation créative intense et profitable, passionnée et spontanée où l'émotion des éléments chromatiques se mêle à la recherche de matériaux et de techniques d'impression innovants.

De cette vision est née la collection de papiers peints **Missoni Wallcoverings 05**: une proposition innovante, qui harmonise les nuances, les géométries et la nature, dans un kaléidoscope de dessins, de matériaux et de couleurs interprétés avec une technique à forte valeur innovante.





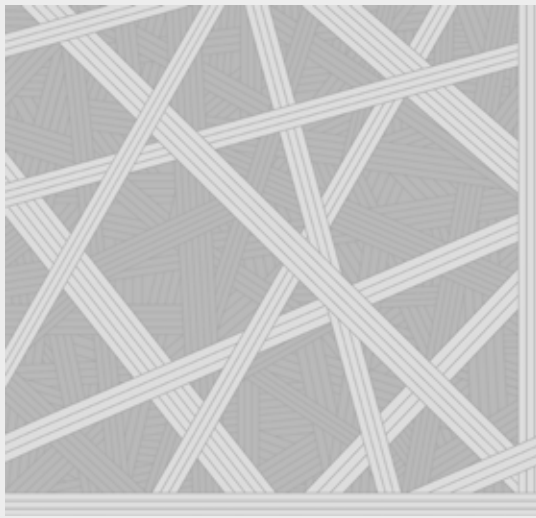


Zambia









100 cm – 39.37 in →

Repeat

Pari 95 cm – Straight match 37.40 in ▶◀

Composizione - *Composition* | Vinilico - *Vinyl*  
Base | TNT - *Non woven base*



Sestriere









Anemoni







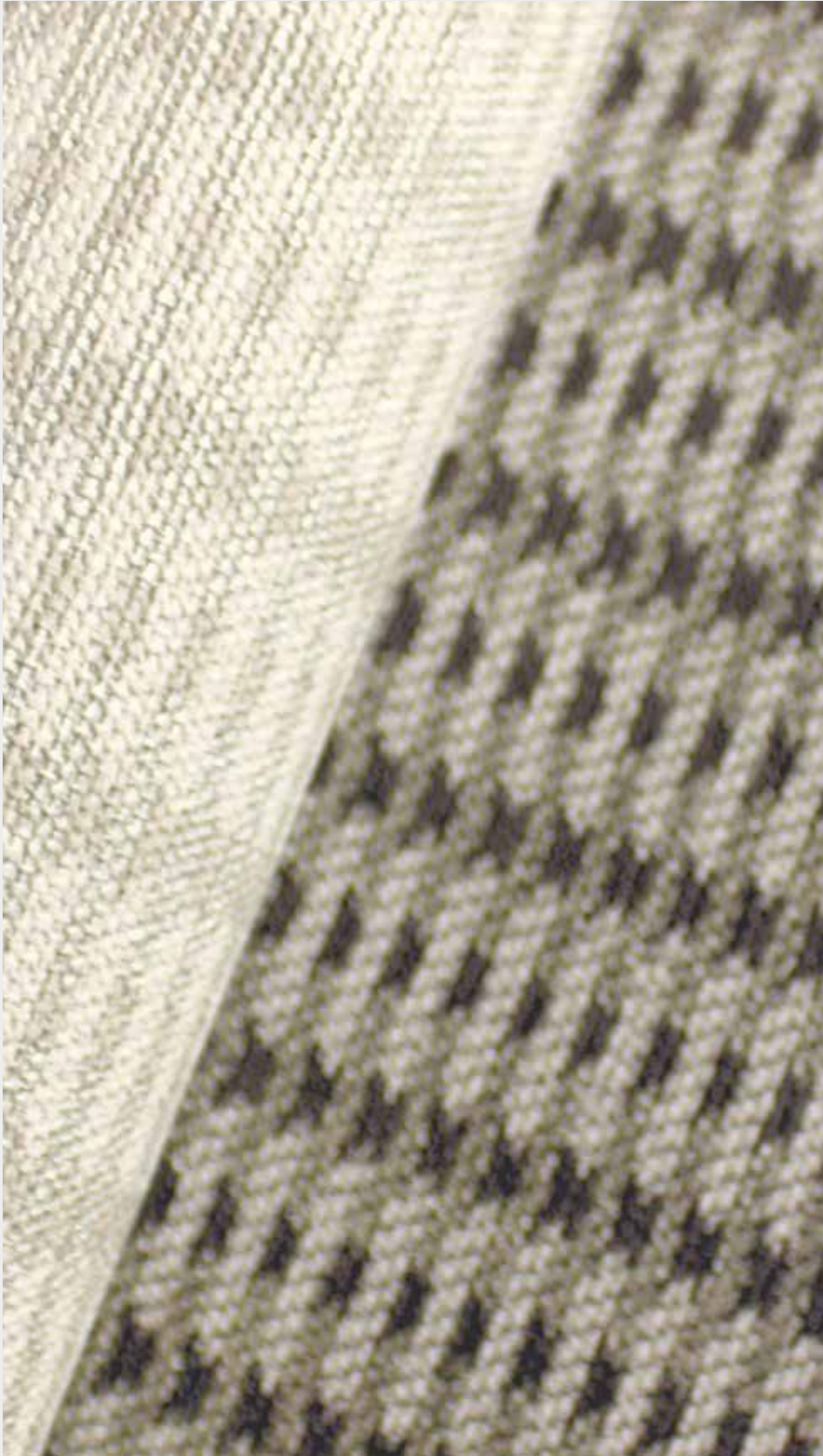


100 cm – 39.37 in →

Repeat

Pari 100 cm – Straight match 39.37 in ▶◀

Composizione - *Composition* | Vinilico - *Vinyl*  
Base | TNT - *Non woven base*



Mozart





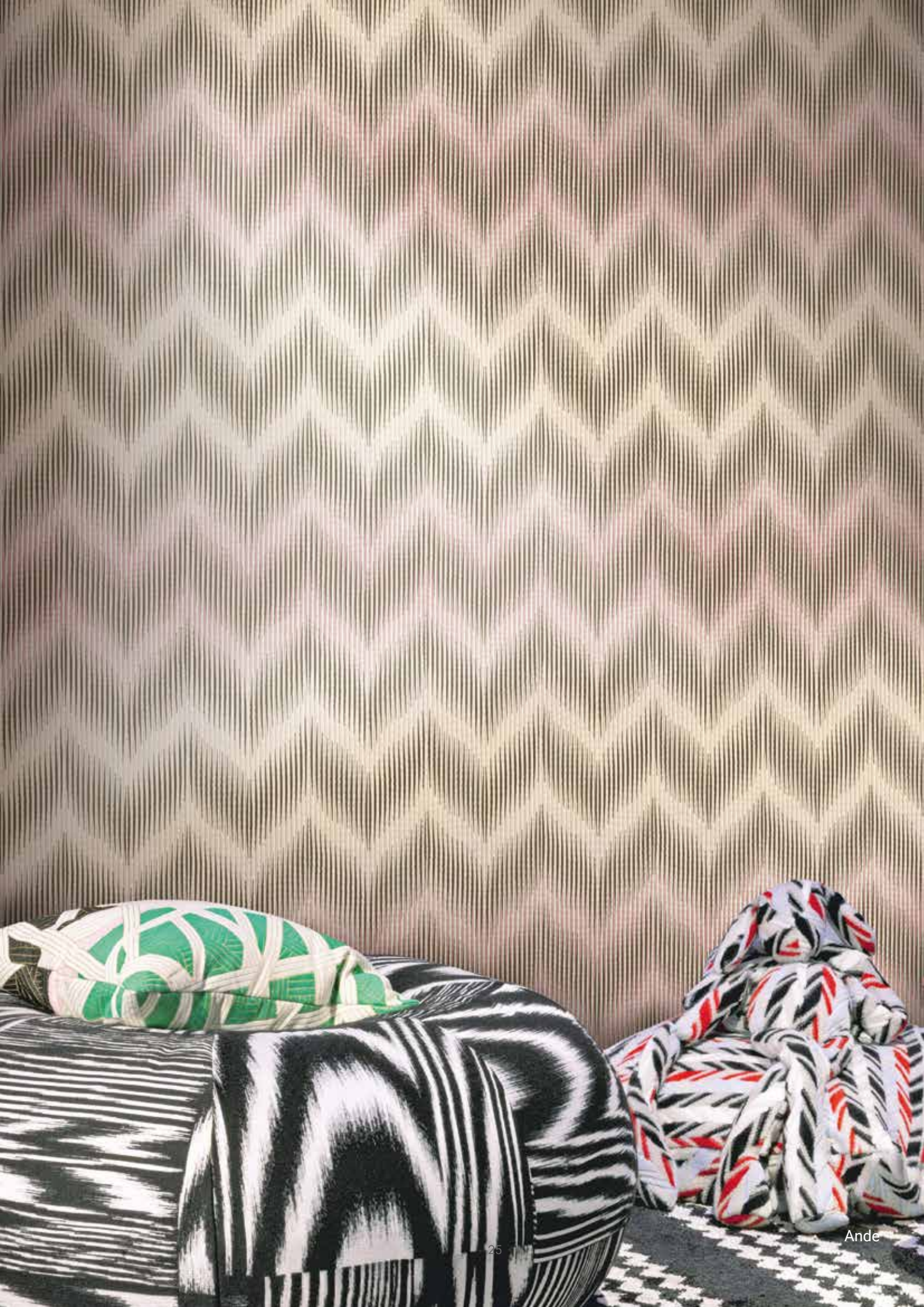


Birch



Linen

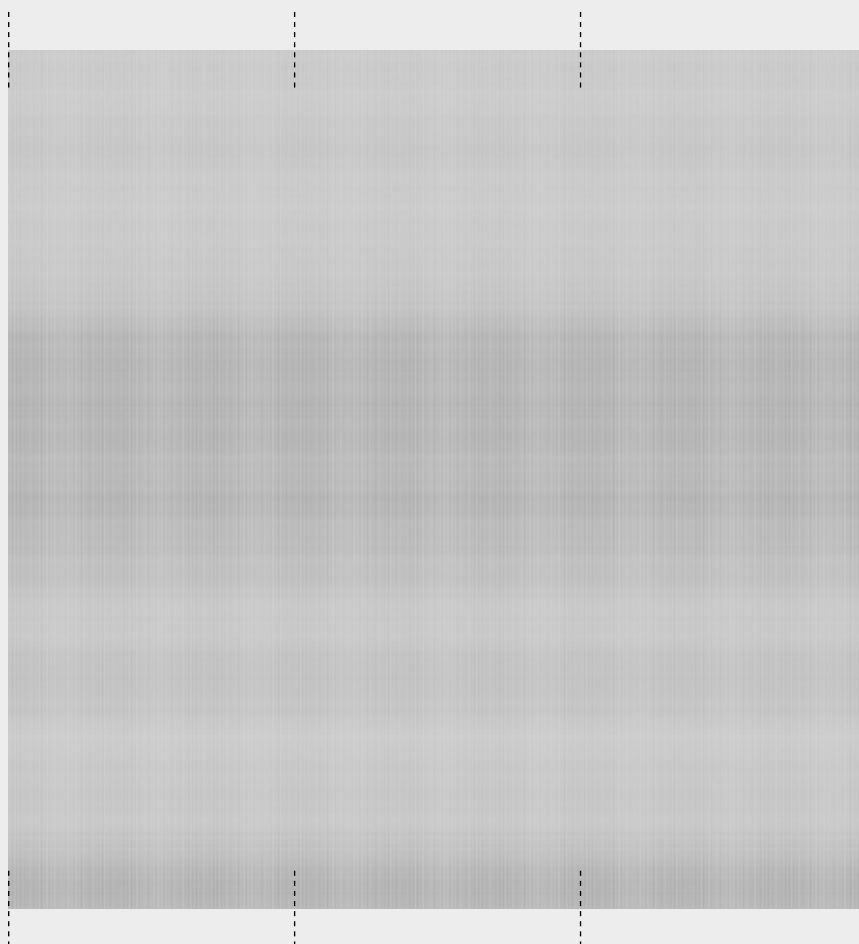






Oleg

Pannello completo – Complete mural



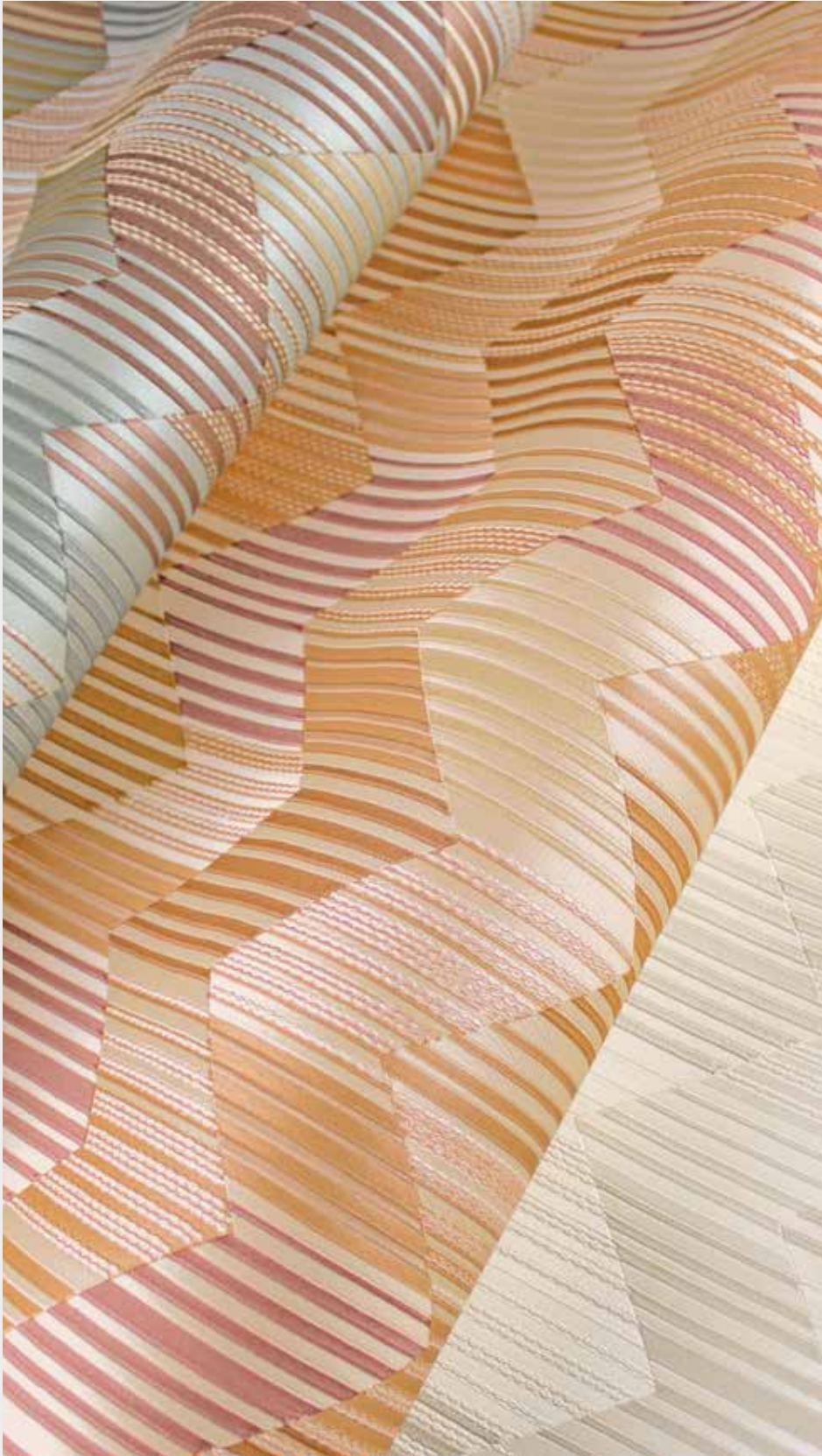
68 cm – 26.77 in →

204 cm – 80.31 in →

b 204 x h 300 cm – w 80.31 x h 118.11 in – 3 teli | 3 panels ▶◀

Composizione - *Composition* | Vinilico - *Vinyl*

Base | TNT - *Non woven base*



Betulle





Anemoni 10500



Anemoni 10501



Anemoni 10502



Anemoni 10503



Anemoni 10504



Ande 10510



Ande 10511



Ande 10512



Ande 10513



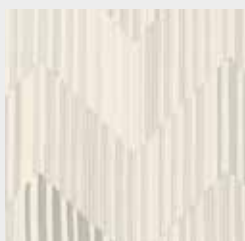
Ande 10514



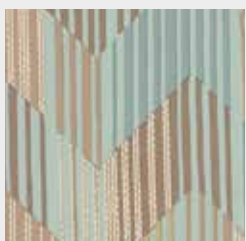
Betulle 10520



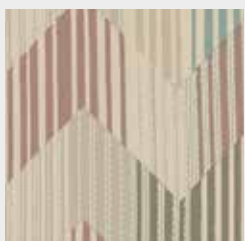
Betulle 10521



Betulle 10522



Betulle 10523



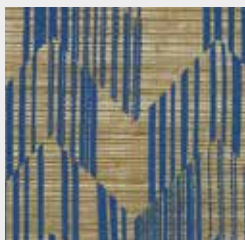
Betulle 10524



Birch 10525



Birch 10526



Birch 10527



Birch 10528



Zambia 10530



Zambia 10531



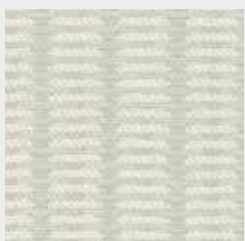
Zambia 10532



Zambia 10533



Mozart 10540



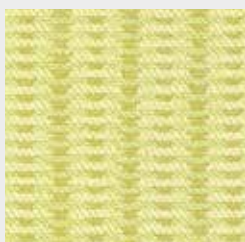
Mozart 10541



Mozart 10542



Mozart 10543



Mozart 10544



Sestriere 10550



Sestriere 10551



Sestriere 10552



Sestriere 10553



Sestriere 10554



Sestriere 10555



Sestriere 10556



Nastri 10560



Nastri 10561



Nastri 10562



Nastri 10563



Nastri 10564



Nastri 10565



Flora 10575



Flora 10576



Flora 10577



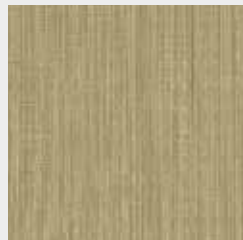
Linen 10590



Linen 10591



Linen 10592



Linen 10593



Linen 10594



Linen 10595



Linen 10596



Linen 10597



Rafia 4762



Rafia 4765

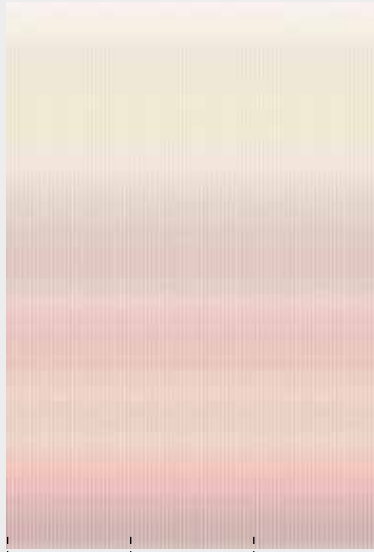


Rafia 4766

Dimensioni rolli – larghezza 100 / 87 / 70 cm  
 Roll size – width 39.37 / 34.25 / 27.55 in



Oleg10570



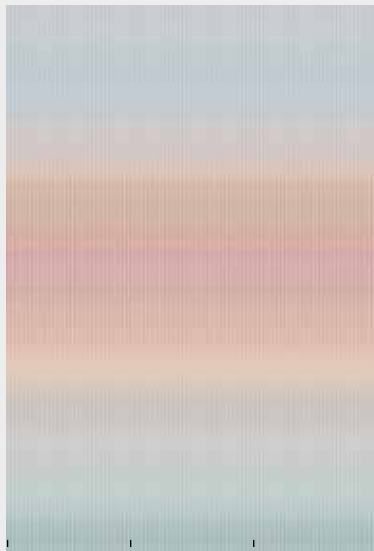
Oleg10571



Oleg105702



Oleg10573



Oleg10574

Pannello b 204 x h 300 cm — Mural w 80.31 x h 118.11 in

Telo b 68 cm — Panel w 26.77 in — 4 teli | 4 panels ▶|◀

Composizione - *Composition*  
Vinilico - *Vinyl*

Base  
TNT - *Non woven base*





Nastri shade10581



Nastri shade10580



Nastri shade10583



Nastri shade10582



Nastri shade10585



Nastri shade10584

Pannello b 360 x h 320 cm – Mural w 141.73 x h 125.98 in

Telo b 90 cm – Panel w 35.43 in – 4 teli | 4 panels ▶|◀

Composizione - *Composition*

Tessuto non tessuto Fibroso Laminato - *Metallic non woven*

Base

TNT - *Non woven base*



Lidia Jannelli, Mauro Jannelli, Paola Alba Jannelli

Fondata nel 1961 da Oreste Jannelli, è leader in Italia nei rivestimenti murali e carte da parati 100% Made in Italy, dai più alti standard di stile e qualità.

È oggi di proprietà dei tre figli: Mauro Jannelli (CEO), Paola Jannelli (Resp.le CreativeLab e Comunicazione), Lidia Jannelli (CFO).

Suoi i brand JV Italian Design e JWall (la collezione 2013 viene selezionata nell'Adi Design Index 2014), disegnati dal CreativeLab dell'Azienda e CO.DE Contemporary Design by Jannelli (presentata ad aprile 2019).

JV License include invece collaborazioni esclusive con design iconici e con il mondo dell'arte: M.C. Escher, Marimekko, Leonardo, Composition - A Tribute to Kandinsky. È licenziataria esclusiva di ArmaniCasa per Armani/Casa Wallcoverings Collection e Missoni per Missoni Wallcoverings.

Ha partecipato alle principali fiere internazionali: Maison&Objet, Déco Off, Heimtextil, Mosbuild.

Nell'aprile 2019 la sua prima presenza al Salone del Mobile, nel Padiglione S.Project dedicato ai progetti contract, con uno stand co-firmato Matteo Ragni e Paola Jannelli.

L'azienda, che ha sempre prestato attenzione al link tra industria e ambiente, continua nel suo processo di sostenibilità e di ampliamento dei sistemi di economia circolare, anche grazie all'implementazione di nuove tecnologie di produzione, con l'utilizzo di materie prime certificate e il riutilizzo dell'energia prodotta.

Costruisce un sistema di economia circolare con Greenwall, nato in collaborazione con Polygreen. Greenwall è un materiale ricavato dagli scarti di produzione dei rivestimenti in vinilico, poi aggiunto a materiali di origine vegetale, dando vita a superfici in erba sintetica, utilizzati in ambito sportivo.

Founded in 1961 by Oreste Jannelli, Jannelli&Volpi leads Italian wallpaper industry for his 100% quality Made in Italy product.

Currently managed by Mauro Jannelli (CEO), Lidia Jannelli (CFO) and Paola Jannelli (CreativeLab and Communication manager).

JV's brands are JV Italian Design and JWall (in 2013 the second one has been selected by Adi Design Index 2014), designed by JV CreativeLab and CO.DE Contemporary Design by Jannelli (presented in April 2019).

'JV License' is inspired by the world of art and by iconic designs: M.C. Escher, Leonardo, Composition - A Tribute to Kandinsky and Marimekko (exclusive license).

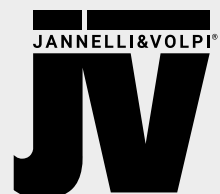
JV is also Armani Casa's exclusive licensor for 'Armani Casa Wallcoverings Collection' and Missoni one for Missoni Wallcoverings.

JV attends the most important exhibitions in Europe: Heimtextil in Frankfurt, Deco-off and Maison&Objet in Paris and Mosbuild in Moscow.

In 2019, for the first time ever, JV attends Salone del Mobile as well with a stand of 200sqm, presented by the cooperation of Paola Jannelli and Matteo Ragni.

The company, has always paid attention to the link between industry and the environment, is building a circular economy process which together with the implementation of production technologies, the use of certified raw materials and the recovery of the produced energy.

Greenwall, which is born in collaboration with Polygreen, is a material made from production waste of vinyl wallcoverings in addition to material was vegetable in origin, giving birth to synthetic grass surfaces for the use in the sport practices.



JANNELLI&VOLPI®  
Carte da parati | Rivestimenti murali | Tessuti d'arredamento

Head Office  
Via Cassino d'Alberi 19 | 20067 Tribiano | Milano | Italy  
T +39 02 51 66 3 1  
customer1@jannellievolti.it

JVstudio  
Via Statuto 21 | 20121 | Milano | Italy  
T +39 02 20 52 3 1 | +39 02 20 52 3 137  
studio@jannellievolti.it

[www.jannellievolti.it](http://www.jannellievolti.it)  
[www.missonihome-wallcoverings.it](http://www.missonihome-wallcoverings.it)

