

FISH

Collection M.C. ESCHER

Description

An innovative project in terms of subjects and techniques. Unique and fascinating, in the collection, the world of Escher revolves around four elements: air, water, architecture, and eros.

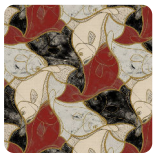


23,50 cm - 9.25 in

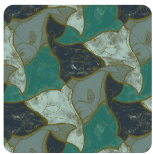
0,70 m - 2.296 ft



Colors (5)



23100



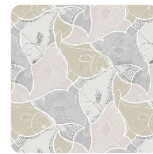
23101



23102



23103



23104

Technical specifications

SKU	23100
Width	0,70 m - 2.296 ft
Length	10,05 m - 32.964 ft
Composition	NON-WOVEN
Sold by	ROLL
Repeat	23,50 cm - 9.25 in
Match	STRAIGHT MATCH
Vertical repeat	23,50 cm - 9.25 in
Fire rating	B-S1,D0
Strippability	STRIPPABLE
Paste	PASTE THE WALL
Recommended glue	ADHESJVE
Washability	WASHABLE