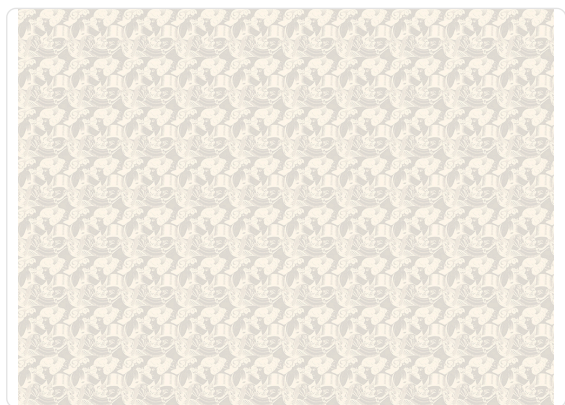


EIGHT HEADS

Collection M.C. ESCHER

Description

An innovative project in terms of subjects and techniques. Unique and fascinating, in the collection, the world of Escher revolves around four elements: air, water, architecture, and eros.



6,50 cm - 2.56 in

0,70 m - 2.296 ft



Colors (4)



23160



23161



23162



23163

Technical specifications

SKU	23160
Width	0,70 m - 2.296 ft
Length	10,05 m - 32.964 ft
Composition	NON-WOVEN
Sold by	ROLL
Repeat	6,50 cm - 2.56 in
Match	STRAIGHT MATCH
Vertical repeat	6,50 cm - 2.56 in
Fire rating	B-S1,D0
Strippability	STRIPPABLE
Paste	PASTE THE WALL
Recommended glue	ADHESJVE
Washability	WASHABLE