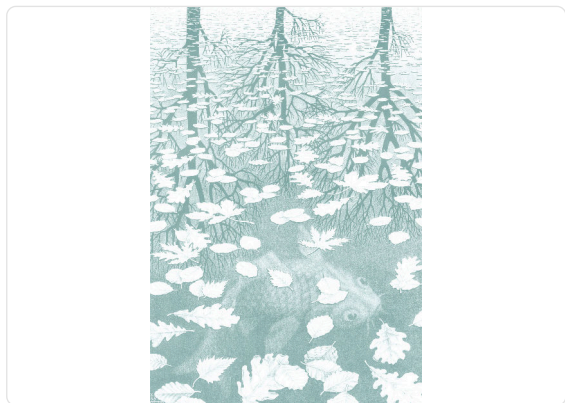


# THREE WORLDS

Collection M.C. ESCHER

## Description

An innovative project in terms of subjects and techniques. Unique and fascinating, in the collection, the world of Escher's revolves around four elements: air, water, architecture, and eros.



300,00 cm - 118.11 in

0,68 m - 2.230 ft



## Colors (1)



23180

## Technical specifications

SKU	23180
Width	0,68 m - 2.230 ft
Length	9,00 m - 29.52 ft
Composition	NON-WOVEN METALLIZED
Sold by	PANEL - CM 204 L X 300 H
Match	NO REPETITION
Vertical repeat	300,00 cm - 118.11 in
Fire rating	B-S1,D0
Strippability	STRIPPABLE
Paste	PASTE THE WALL
Recommended glue	ADHESJVE
Washability	WASHABLE