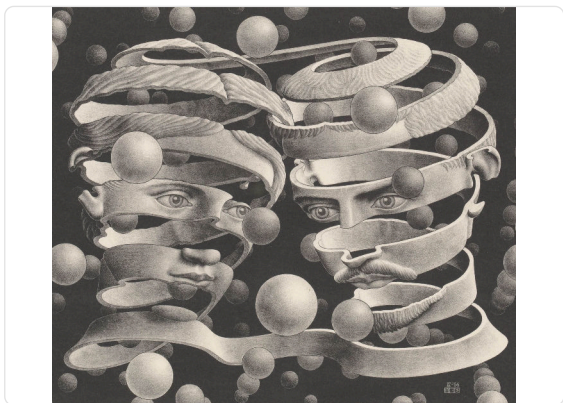


BOUND OF UNION

Collection M.C. ESCHER

Description

An innovative project in terms of subjects and techniques. Unique and fascinating, in the collection, the world of Escher revolves around four elements: air, water, architecture, and eros.



300,00 cm - 118.11 in

0,70 m - 2.296 ft



Colors (1)



23186

Technical specifications

SKU	23186
Width	0,70 m - 2.296 ft
Length	15,00 m - 49.20 ft
Composition	NON-WOVEN
Sold by	PANEL - CM 350 L X 300 H
Match	NO REPETITION
Vertical repeat	300,00 cm - 118.11 in
Fire rating	B-S1,D0
Strippability	STRIPPABLE
Paste	PASTE THE WALL
Recommended glue	ADHESJVE
Washability	WASHABLE