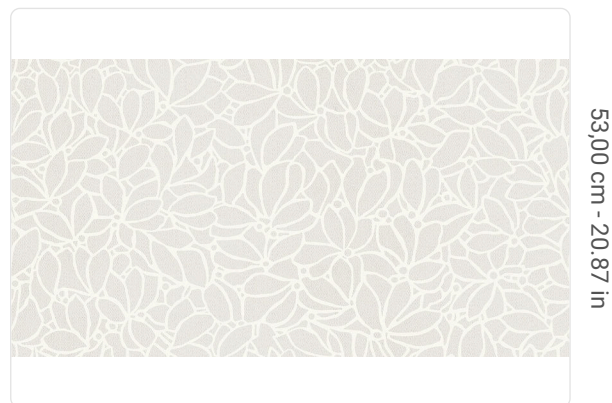


KUNST

Collection ACADEMY A Tribute To Gustav Klimt

Description

ACADEMY - a tribute to Gustav Klimt. The tribute is based on the elaboration of his great works from the golden period, where he revisits the art of Byzantine mosaics. The result is a collection rich in true masterpieces, with luminous and brilliant relief enamels expressed through a high-thickness embossing. A meticulous and chromatically rich exploration: gold, blue, red expressed in mosaic patterns and murals clearly inspired by Klimt.



53,00 cm - 20.87 in

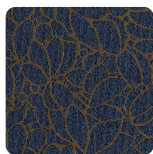
1,00 m - 3.28 ft



Colors (4)



25620



25621



25622



25623

Technical specifications

SKU	25622
Width	1,00 m - 3.28 ft
Length	10,05 m - 32.964 ft
Composition	HEAVY WEIGHT VINYL
Base Support	NON-WOVEN
Sold by	ROLL
Repeat	53,00 cm - 20.87 in
Match	STRAIGHT MATCH
Vertical repeat	53,00 cm - 20.87 in
Fire rating	B-S2,D0
Strippability	STRIPPABLE
Paste	PASTE THE WALL
Recommended glue	JV ADHESJVE OR JV ADHESJVE CONTRACT SUPER STRONG
Washability	EXTRA WASHABLE