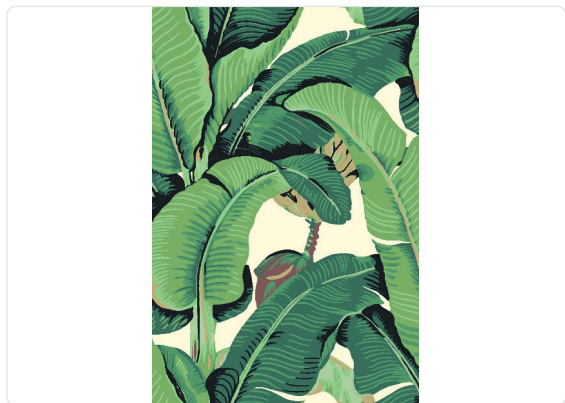


Hinson Palm

Collection ScalamandrÉ

Story behind the collection

ScalamandrÉ and Jannelli&Volpi give life to an unprecedented collaboration, ScalamandrÉ by Jannelli&Volpi: a travel story through the 5 continents characterized by a graphic sign that originates from the classic style of the nineteenth century. The collection thus links together important designs in large format and with a personal style, expertly interpreted by bright and intense colors, and by supports such as non-woven fabric, silks and straws. Rich colors, bold patterns and lots of energy abound in the color palette of Hinson Palm. One of the most popular designs in the world, it features a large motif of banana leaves that create a vigorous and dominant tropical atmosphere.



105,00 cm - 41,34 in

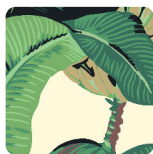
0,70 mt - 2,30 ft



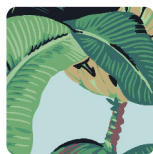
Colors (6)



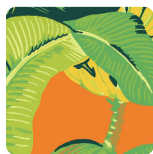
26009



26010



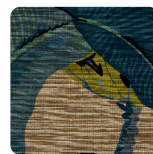
26011



26012



26013



26014

Technical specifications

| | |
|-----------------|----------------------|
| SKU | 26010 |
| Width | 0,70 mt - 2,30 ft |
| Length | 10,05 mt - 32,96 ft |
| Composition | NON-WOVEN |
| Sold by | ROLL |
| Repeat | 52,50 cm - 20,67 in |
| Match | OFFSET MATCH |
| Vertical repeat | 105,00 cm - 41,34 in |
| Fire rating | B-S1,D0 |
| Strippability | STRIPPABLE |
| Paste | PASTE THE WALL |
| Washability | EXTRA WASHABLE |