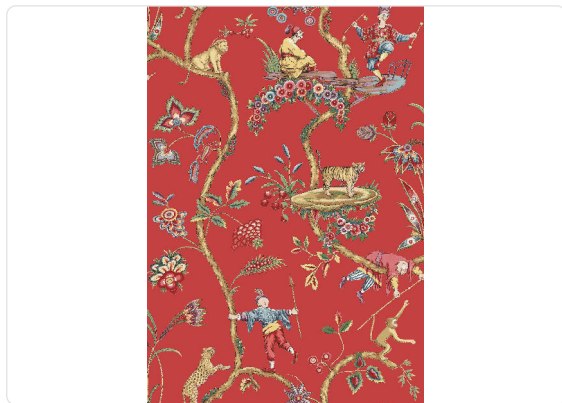


# Chinoise Exotique

Collection ScalamandrÉ

## Story behind the collection

ScalamandrÉ and Jannelli&Volpi give life to an unprecedented collaboration, ScalamandrÉ by Jannelli&Volpi: a travel story through the 5 continents characterized by a graphic sign that originates from the classic style of the nineteenth century. The collection thus links together important designs in large format and with a personal style, expertly interpreted by bright and intense colors, and by supports such as non-woven fabric, silks and straws. Based on an early 18th century French document, Chinoise Exotique Wallpaper is a grand design showcasing various interactions between Chinese figures, tropical botanicals, and exotic animals such as tigers, lions, cheetahs, and monkeys. This pattern is a classic example of the kinds of chinoiserie patterns developed for export to the European market in the early 1700s. These designs became so popular that France passed a law banning them from sale out of fear that they would collapse the French textile market.



101,00 cm - 39,76 in

0,70 mt - 2,30 ft



## Colors (6)



26025



26026



26027



26028



26029



26030

## Technical specifications

|                 |                      |
|-----------------|----------------------|
| SKU             | 26027                |
| Width           | 0,70 mt - 2,30 ft    |
| Length          | 10,05 mt - 32,96 ft  |
| Composition     | NON-WOVEN            |
| Sold by         | ROLL                 |
| Repeat          | 52,50 cm - 20,67 in  |
| Match           | OFFSET MATCH         |
| Vertical repeat | 101,00 cm - 39,76 in |
| Fire rating     | B-S1,D0              |
| Strippability   | STRIPPABLE           |
| Paste           | PASTE THE WALL       |
| Washability     | EXTRA WASHABLE       |