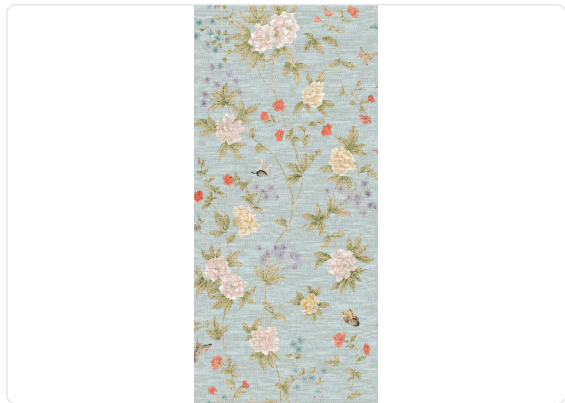


# Luoyang Garden

Collection Scalamandré

## Story behind the collection

Scalamandré and Jannelli&Volpi give life to an unprecedented collaboration, Scalamandré by Jannelli&Volpi: a travel story through the 5 continents characterized by a graphic sign that originates from the classic style of the nineteenth century. The collection thus links together important designs in large format and with a personal style, expertly interpreted by bright and intense colors, and by supports such as non-woven fabric, silks and straws. The name Luoyang is derived from an internationally renowned peony garden in China. This delicately detailed wallcovering of blossoming peonies and butterflies is adapted from a hand painted Chinese silk panel discovered in the Scalamandré archives. The soft watercolor rendering is printed on raffia plant fiber, adding texture and dimension.



190,00 cm - 74,80 in

0,87 mt - 2,85 ft



## Colors (2)



26035



26036

## Technical specifications

SKU	26036
Width	0,87 mt - 2,85 ft
Length	1,00 mt - 3,28 ft
Composition	NATURAL RAFFIA FIBER
Sold by	LINEAR METER
Repeat	95,00 cm - 37,40 in
Match	OFFSET MATCH
Vertical repeat	190,00 cm - 74,80 in
Fire rating	B-S1,D0
Strippability	STRIPPABLE
Paste	PASTE THE WALL
Washability	WASHABLE