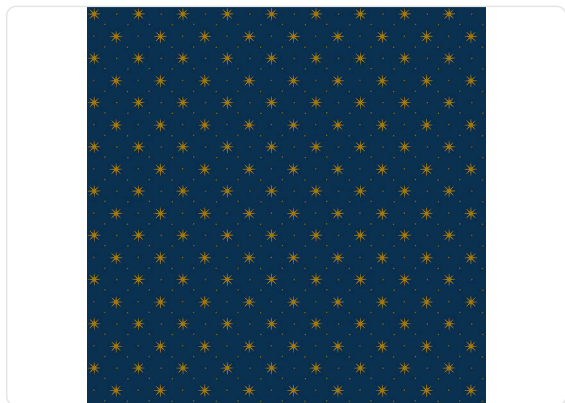
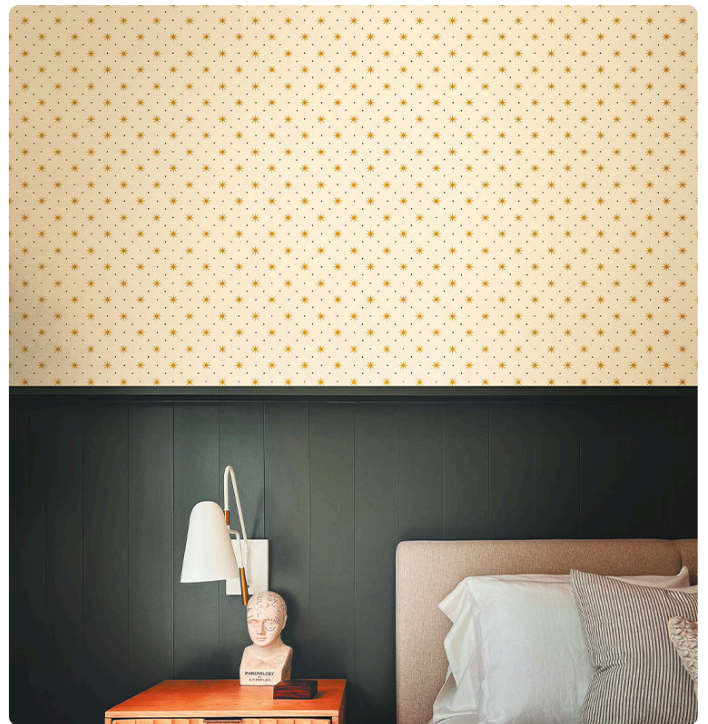


# Trixie

Collection ScalamandrÉ

## Story behind the collection

ScalamandrÉ and Jannelli&Volpi give life to an unprecedented collaboration, ScalamandrÉ by Jannelli&Volpi: a travel story through the 5 continents characterized by a graphic sign that originates from the classic style of the nineteenth century. The collection thus links together important designs in large format and with a personal style, expertly interpreted by bright and intense colors, and by supports such as non-woven fabric, silks and straws. Trixie shows a small-scale combination of stars and graphic dots printed on a solid background; it is offered in various shades with the stars in glossy relief to restore the excitement of a starry sky. Albert Hadley designed Trixie for a special exhibition at the New York Public Library.



8,00 cm - 3,15 in

0,70 mt - 2,30 ft



## Colors (4)



26053



26054



26055



26056

## Technical specifications

SKU	26056
Width	0,70 mt - 2,30 ft
Length	10,05 mt - 32,96 ft
Composition	NON-WOVEN
Sold by	ROLL
Repeat	8,00 cm - 3,15 in
Match	STRAIGHT MATCH
Vertical repeat	8,00 cm - 3,15 in
Fire rating	B-S1,D0
Strippability	STRIPPABLE
Paste	PASTE THE WALL
Washability	EXTRA WASHABLE