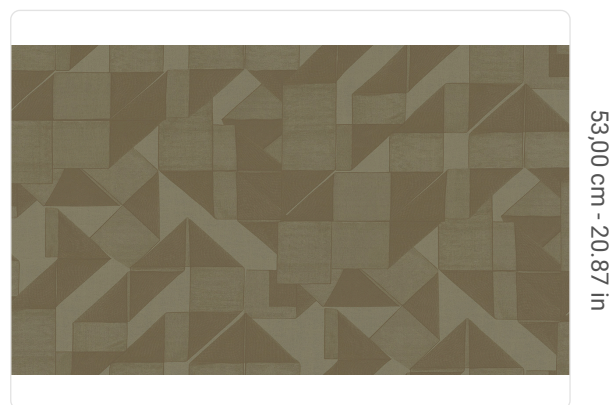


# HONSHU

Collection GRAPHIC ELEMENTS 3

## Description

Faithful to its journey connotation, Graphic Elements 3 by Armani/Casa invites to explore the Far East: the aura of Japanese islands, with their rich nature and millenary culture, was the source of inspiration for patterns and textures featured in this collection. Honshu, the largest of Japanese islands, is rich in typical traditions. Among those, the one of origami occupies a special place in local culture. The ancient art of folding paper is reposed through the design of never-ending paper ribbons, folding and intersecting each other on the whole surface of the wallcovering. The design is obtained through a print with matt inks in relief, contrasting with the background made of a metallic silver gauze on a non-woven base.



53,00 cm - 20.87 in

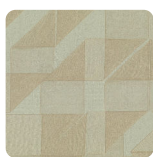
0,90 m - 2.952 ft



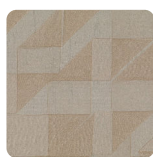
## Colors (3)



8010



8011



8012

## Technical specifications

SKU	8011
Width	0,90 m - 2.952 ft
Length	1,00 m - 3.28 ft
Composition	COUPLED WITH METALLIC FABRIC
Sold by	LINEAR METER
Repeat	32,20 cm - 12.68 in
Match	OFFSET MATCH
Vertical repeat	53,00 cm - 20.87 in
Fire rating	B-S1, D0
Strippability	STRIPPABLE
Paste	PASTE THE WALL
Washability	EXTRA WASHABLE