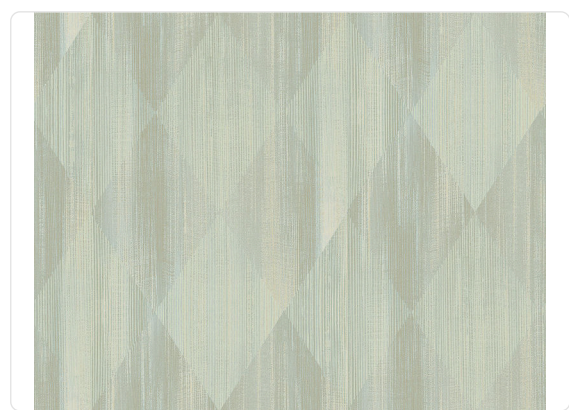


HOKKAIDO

Collection GRAPHIC ELEMENTS 3

Description

Faithful to its journey connotation, Graphic Elements 3 by Armani/Casa invites to explore the Far East: the aura of Japanese islands, with their rich nature and millenary culture, was the source of inspiration for patterns and textures featured in this collection. Macro-scale rhombuses are the protagonists of Hokkaido, a wallcovering where the impactful design is obtained through a print of a metallic silver gauze on a non-woven base. The bold geometry is a direct reference to fashion and repropose the main theme of the Giorgio Armani Privé collection of haute-couture for Spring-Summer 2023. Another link to the world of textiles can be found in the three-dimensional vertical lines marking the non-woven support, which recall the different threads and yarns composing a fabric. A further touch of refinement is given by the higher transparency of the print in defined areas, which make the metallic foil more visible and hence more light reflective.



70,00 cm - 27.56 in

0,90 m - 2.952 ft



Colors (4)



8014



8015



8016



8017

Technical specifications

SKU	8014
Width	0,90 m - 2.952 ft
Length	1,00 m - 3.28 ft
Composition	COUPLED WITH METALLIC FABRIC
Sold by	LINEAR METER
Repeat	70,00 cm - 27.56 in
Match	STRAIGHT MATCH
Vertical repeat	70,00 cm - 27.56 in
Fire rating	B-S1, D0
Strippability	STRIPPABLE
Paste	PASTE THE WALL
Washability	EXTRA WASHABLE