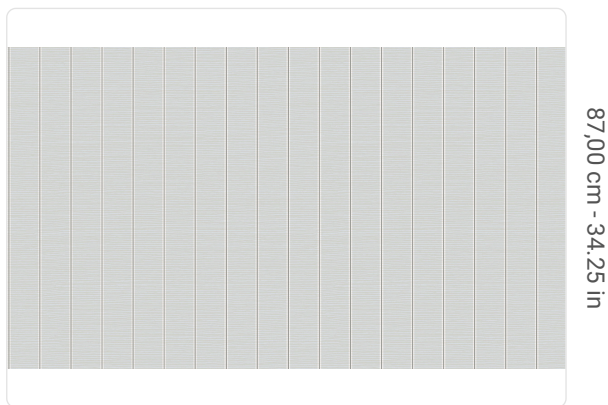
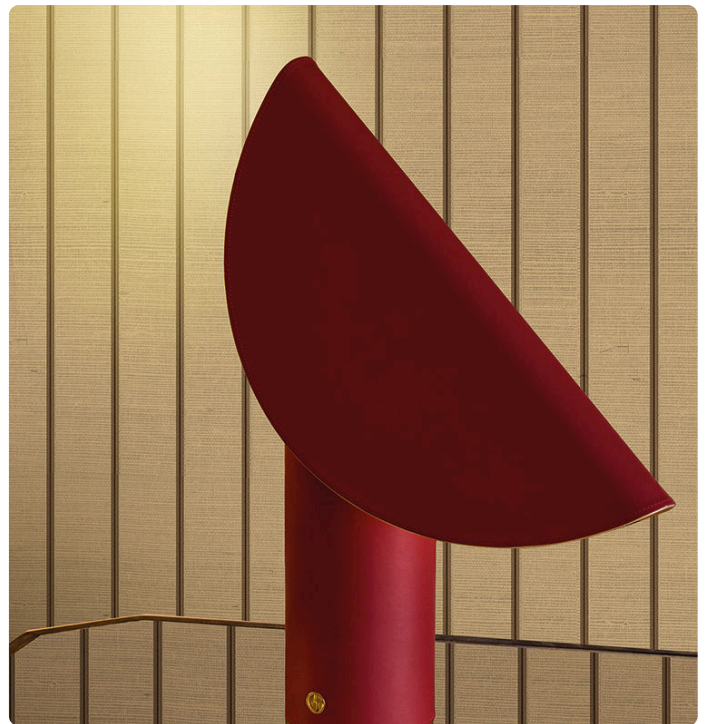


# REBUN

Collection GRAPHIC ELEMENTS 3

## Description

Faithful to its journey connotation, Graphic Elements 3 by Armani/Casa invites to explore the Far East: the aura of Japanese islands, with their rich nature and millenary culture, was the source of inspiration for patterns and textures featured in this collection. A wallcovering where vertical lines echo the iconic canneté pattern typical of Giorgio Armani aesthetics. The whole surface is marked by a micro-texture given by the raffia support, applied on silver foil and eventually printed to create the design. On Rebun, matt ink in relief draws the thin stripes giving rhythm to the design.



0,87 m - 2.854 ft



## Technical specifications

|                 |                                    |
|-----------------|------------------------------------|
| SKU             | 8026                               |
| Width           | 0,87 m - 2.854 ft                  |
| Length          | 1,00 m - 3.28 ft                   |
| Composition     | NATURAL RAFFIA FIBER ON METAL FOIL |
| Sold by         | LINEAR METER                       |
| Match           | FREE MATCH                         |
| Vertical repeat | 87,00 cm - 34.25 in                |
| Fire rating     | B-S1, D0                           |
| Strippability   | STRIPPABLE                         |
| Paste           | PASTE THE WALL                     |
| Washability     | WASHABLE                           |

## Colors (9)



8023



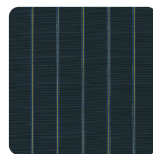
8024



8025



8026



8027



8051



8052



8053



8054