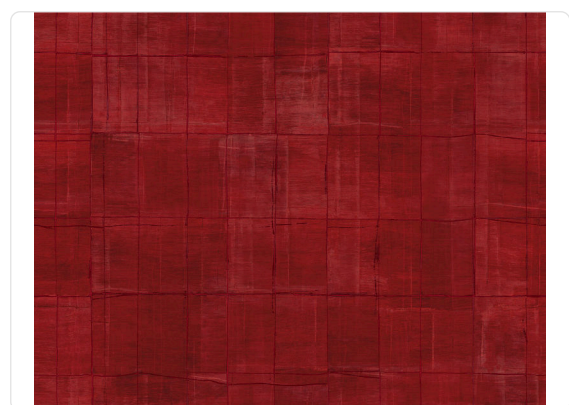


KYUSHU

Collection GRAPHIC ELEMENTS 3

Description

Faithful to its journey connotation, Graphic Elements 3 by Armani/Casa invites to explore the Far East: the aura of Japanese islands, with their rich nature and millenary culture, was the source of inspiration for patterns and textures featured in this collection. One of the four major islands in the archipelago, Kyushu is considered the birthplace of Japanese culture. This wallcovering plays with three-dimensionality to recreate large enamelled tiles, in two versions emphasized by the use of particular techniques. The metallized version is obtained thanks to a 3D print on a non-woven base coupled with silver foil, which gives a satin effect to the final product; here, joints in between the tiles are matt. The second version, instead, has a shinier appearance thanks to a lacquer-effect print on a non-woven gauze, which emphasizes the grid.



70,00 cm - 27.56 in

0,90 m - 2.952 ft



Technical specifications

SKU	8041
Width	0,90 m - 2.952 ft
Length	1,00 m - 3.28 ft
Composition	COUPLED WITH NON-WOVEN
Sold by	LINEAR METER
Repeat	70,00 cm - 27.56 in
Match	STRAIGHT MATCH
Vertical repeat	70,00 cm - 27.56 in
Fire rating	B-S1, D0
Strippability	STRIPPABLE
Paste	PASTE THE WALL
Washability	EXTRA WASHABLE

Colors (9)



8037



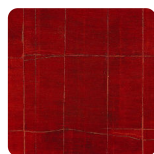
8038



8039



8040



8041



8043



8044



8045



8046