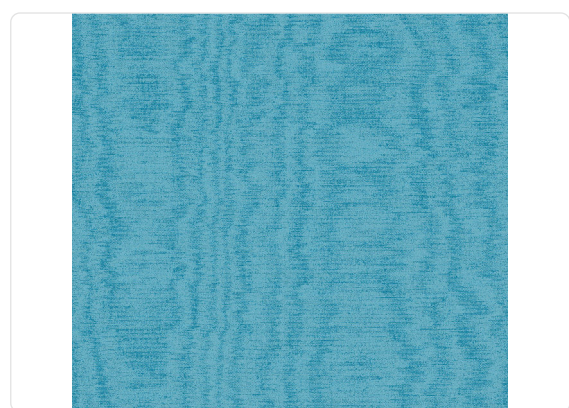


# ELBA

## Collection GRAPHIC ELEMENTS 2

### Description

The Armani/Casa Exclusive Wallcovering Collection is enriched with new proposals with the launch of the new Graphic Elements 2 range. This collection is a journey through some of the most famous islands of the Mediterranean, including Pantelleria, Giorgio Armani's favourite, and a place from which the designer has often drawn inspiration. The central element is colour; it is used boldly here, with fundamental tones of red, indigo, forest green, viridian and an intense petrol-blue, all combined with elegant neutral shades. The unique line is rich and refined: precious pleats, with a strong link with the world of fashion, are reminiscent of trompe-l'oeil imagery, ranging from a natural effect to a more vintage feel. Natural linen gauze materials with flowers punctuated by geometric shapes, as though they were musical scales, create a certain Japanese atmosphere; macro-brush effects stand out against changing backgrounds, creating stark contrasts. There are plenty of iconic motifs in Armani style: fil posé in a moirée pattern, seen here on a large scale and in bright tones; an elegant shagreen texture in unexpected nuances, and a checkerboard pattern, deconstructed by the harmony of tone-on-tone colours.



64,00 cm - 25.20 in

0,70 m - 2.296 ft



### Technical specifications

SKU	9632
Width	0,70 m - 2.296 ft
Length	1,00 m - 3.28 ft
Composition	FIL POSÉ MURAL FABRIC
Base Support	NON-WOVEN
Sold by	LINEAR METER
Repeat	64,00 cm - 25.20 in
Match	STRAIGHT MATCH
Vertical repeat	64,00 cm - 25.20 in
Fire rating	C-S1,D0
Strippability	STRIPPABLE
Paste	PASTE THE WALL
Recommended glue	JV ADHESJVE CONTRACT SUPER STRONG
Washability	WASHABLE

### Colors (6)



9630

9631

9632

9633

9634

9635