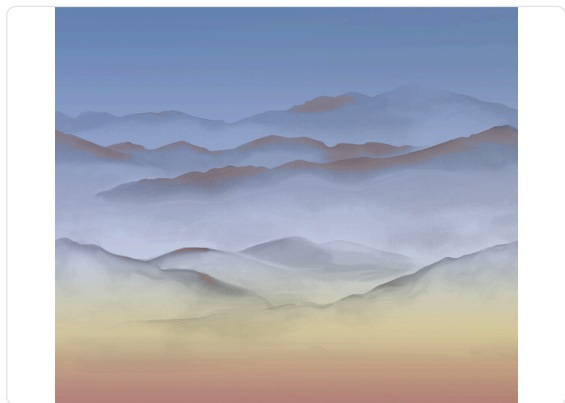


BASHO

Collection INSPIRED MOODS 1

Description

The new Inspired Moods collection by Armani/Casa and Jannelli&Volpi confirms the collaboration between the two companies, consolidated for some years now. Inspired Moods is the new wallcoverings collection by Armani/Casa dedicated to the concept of evasion. Themes inspired by literature and poetry become alive on supports made with precious techniques, through large-format designs able to dress any room with evocative images, exotic reflection and enveloping atmospheres. As often happens in the Armani world, the source of inspiration is reworked and filtered through a particular sensitiveness that confers a refined look to the final product.



3,48 m - 11.414 ft

300,00 cm - 118.11 in



Colors (3)



9900



9901



9902

Technical specifications

| | |
|-----------------|---------------------------|
| SKU | 9902 |
| Width | 3,48 m - 11.414 ft |
| Length | 3,00 m - 9.84 ft |
| Composition | METALLIC SILK WALL FABRIC |
| Sold by | PANEL - CM 348 L X 300 H |
| Repeat | 300,00 cm - 118.11 in |
| Match | STRAIGHT MATCH |
| Vertical repeat | 300,00 cm - 118.11 in |
| Fire rating | B-S1, D0 |
| Strippability | STRIPPABLE |
| Paste | PASTE THE WALL |
| Washability | WASHABLE |