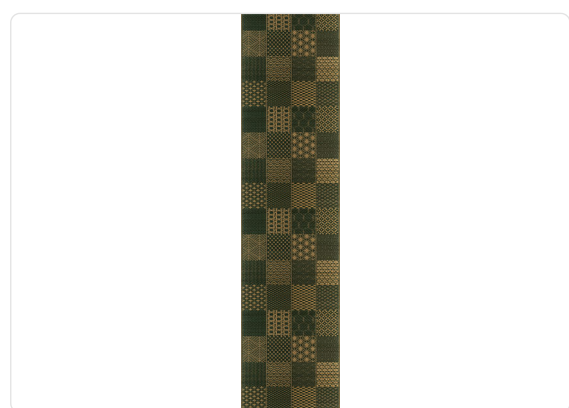


HIROMA

Collection JV 453 IGUSA

Description

Collection made with IGUSA: a fully natural material composed of a type of Japanese reed, flexible yet resistant, used for traditional tatami. The intense and natural designs and colorations reflect traditional Japanese patterns and the landscape from which the product originates. The product behaves like a double-faced fabric, with both sides perfectly worked and finished, varying only in chromatic dominance.



0,87 m - 2.854 ft

0,00 cm - 0,00 in



Technical specifications

| | |
|------------------|-----------------------------------|
| SKU | 6300 |
| Width | 0,87 m - 2.854 ft |
| Length | 3,50 m - 11.48 ft |
| Composition | 100% NATURAL IGUSA FIBER |
| Sold by | PANEL - CM 87 L X 350 H |
| Match | FREE MATCH |
| Strippability | STRIPPABLE |
| Paste | PASTE THE WALL |
| Recommended glue | ADHESJVE CONTRACT EXTRA CLEAR |
| Washability | SUPER SMACCHIABILE E SPAZZOLABILE |

Colors (7)



6300

6302

6304

6306

6308

6310

6312