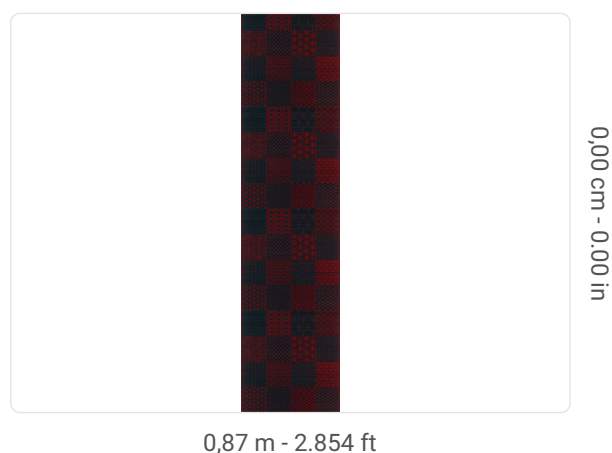


HIROMA

Collection JV 453 IGUSA

Description

Collection made with IGUSA: a fully natural material composed of a type of Japanese reed, flexible yet resistant, used for traditional tatami. The intense and natural designs and colorations reflect traditional Japanese patterns and the landscape from which the product originates. The product behaves like a double-faced fabric, with both sides perfectly worked and finished, varying only in chromatic dominance.



Technical specifications

SKU	6302
Width	0,87 m - 2.854 ft
Length	3,50 m - 11.48 ft
Composition	100% NATURAL IGUSA FIBER
Sold by	PANEL - CM 87 L X 350 H
Match	FREE MATCH
Strippability	STRIPPABLE
Paste	PASTE THE WALL
Recommended glue	ADHESJVE CONTRACT EXTRA CLEAR
Washability	SUPER SMACCHIABILE E SPAZZOLABILE

Colors (7)

