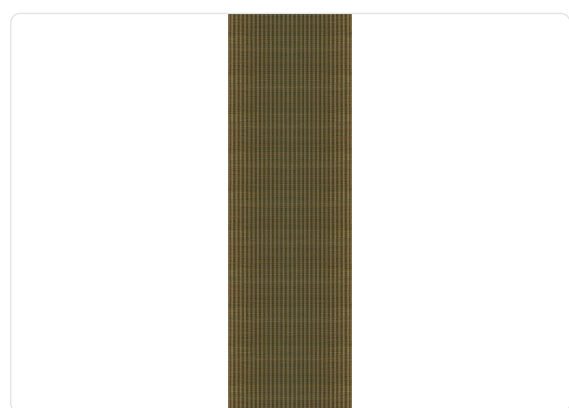


# FUSUMA

Collection JV 453 IGUSA

## Description

Collection made with IGUSA: a fully natural material composed of a type of Japanese reed, flexible yet resistant, used for traditional tatami. The intense and natural designs and colorations reflect traditional Japanese patterns and the landscape from which the product originates. The product behaves like a double-faced fabric, with both sides perfectly worked and finished, varying only in chromatic dominance.



0,00 cm - 0,00 in

0,95 m - 3.116 ft



## Technical specifications

SKU	6324
Width	0,95 m - 3.116 ft
Length	3,08 m - 10.102 ft
Composition	100% NATURAL IGUSA FIBER
Sold by	PANEL - CM 95 L X 308 H
Match	FREE MATCH
Strippability	STRIPPABLE
Paste	PASTE THE WALL
Recommended glue	ADHESJVE CONTRACT EXTRA CLEAR
Washability	SUPER SMACCHIABILE E SPAZZOLABILE

## Colors (7)



6320

6322

6324

6326

6328

6330

6332