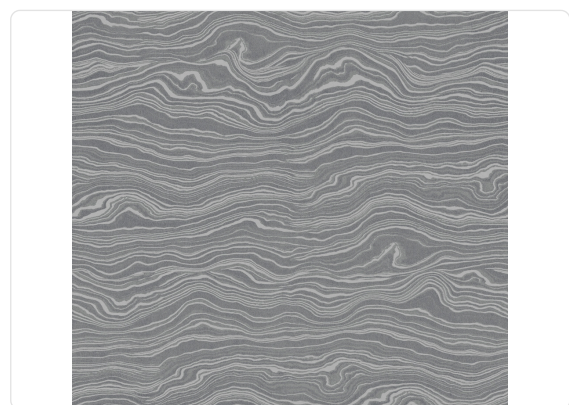


MOIRE KINTSUGI

Collection JV 191 KINTSUGI

Description

Strong character combined with the class of the ancient Japanese tradition of repairing with gold, which dialogues with the classic European reference. Kintsugi has its roots in the 1400s and is revived in the graphics of this collection, enriching its features with strong tones - in reds and blues - or in subtle creams and grays, contrasting with burgundy, sage green, and powder blue. True to tradition, there are brushstrokes in gold, silver, or bronze powder.



64,00 cm - 25.20 in

0,70 m - 2.296 ft



Technical specifications

SKU	6746
Width	0,70 m - 2.296 ft
Length	10,05 m - 32.964 ft
Composition	VINYL
Sold by	ROLL
Repeat	64,00 cm - 25.20 in
Match	STRAIGHT MATCH
Vertical repeat	64,00 cm - 25.20 in
Fire rating	B-S2,D0
Strippability	PEELABLE
Paste	PASTE THE PAPER
Washability	EXTRA WASHABLE

Colors (7)



6740



6741



6742



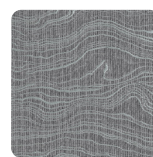
6743



6744



6745



6746